

MID-DECEMBER / 09

Professional Builder®

CHALLENGE. INSPIRE. INFORM. / www.ProBuilder.com

2010 IBS Product Guide

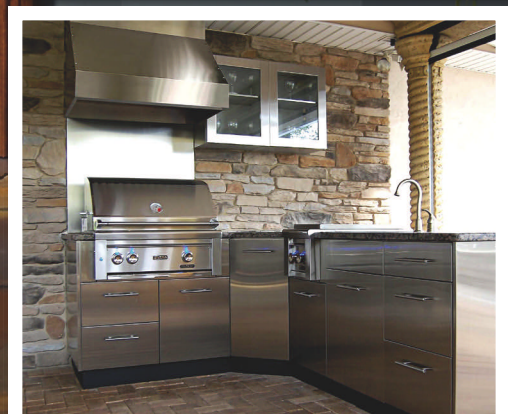
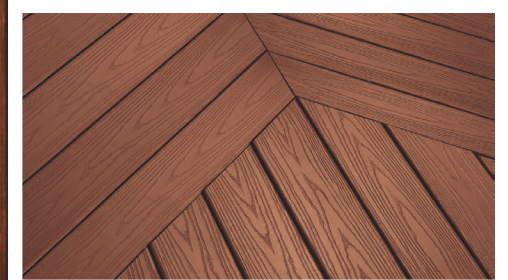
+ Show Village Preview

IN THIS ISSUE

SHOW VILLAGE
GOES GREEN

39 PRODUCTS
DEBUTING AT IBS

GREEN
PRODUCTS
ROUNDUP



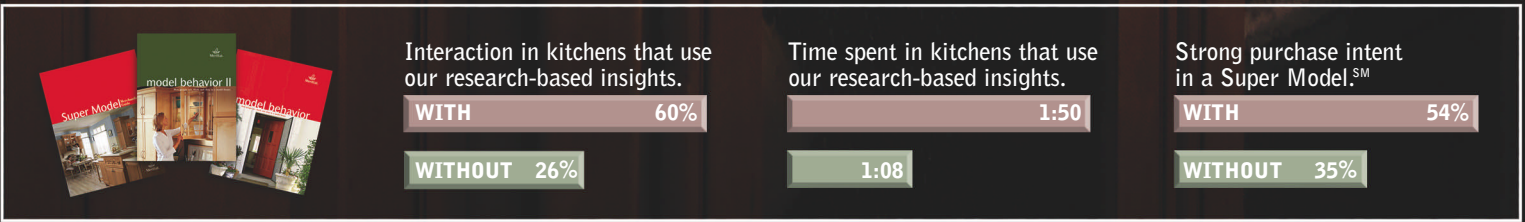
RBI™

Reed Business
Information.



**No wonder they bought the home.
It has everything our research shows she's looking for.**

We know when she falls in love with the kitchen their purchase intent skyrockets. How can we be so sure? Our research confirmed it. In fact, Merillat leads the industry in studying how homebuyers shop and live in new homes. We never stop looking for new ways to transform our proprietary information into better kitchen designs and better model home merchandising. Because it's these insights and tools that make our builders' homes irresistible to homebuyers.



FAUCETS.
FIXTURES.
APPLIANCES.
LIGHTING.
PASSIONATE
PEOPLE!

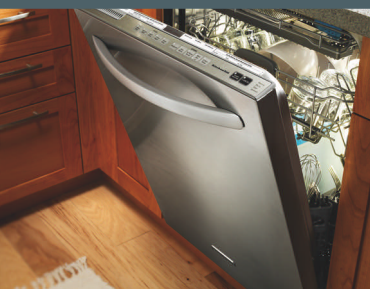


At Ferguson, it's true that our inventory is huge. Our distribution expertise is unrivaled. And our one-stop shopping for building products is the height of convenience. But there is one thing we supply that building professionals have come to rely on again and again for over 50 years – **our people**. Our associates make certain you can depend on Ferguson – where friendly service, expertise, and a willingness to go the extra mile are never in short supply.



Nobody expects more from us than we doSM

ferguson.com/builder



DISHWASHER



BUILT-IN
REFRIGERATION



COOK TOP



ARCHITECT SERIES II



OUTDOOR
KITCHEN

 **FERGUSON[®]**

KitchenAid[®]

Mid-December 2009

Contents

Professional Builder Volume 74, No. 12



In this issue

- 9 **2010 Show Village Preview**
- 19 **Exterior Products**
- 25 **Interior Products**
- 27 **Windows & Doors**
- 33 **Mechanical & Electrical**
- 33 **Structural, Insulation & Housewrap**
- 35 **Construction Equipment, Tools & Software**
- 37 **Green Products**

The Greening of Sin City

If you are among the 60,000-plus home building professionals planning to make the trek to Las Vegas next month for the International Builders' Show, make sure to stop by *Professional Builder's* annual Show Village exhibit. Since 1998, the *PB* team has partnered with industry-leading builders and sponsors to design and build a series of demonstration homes at IBS. For the 2010 show, *PB* partnered with Palm Harbor Homes and Palm Harbor's subsidiary, Nationwide Custom Homes, on three state-of-the-art, modular homes that will be located in the main parking lot at the Las Vegas Convention Center.

For the first time, all three Show Village homes are being designed and built to achieve certification through NAHB's Model Green Home Building Guidelines. Sustainable features include high-performance windows, no-VOC paint and energy-efficient HVAC systems. Learn more about the demo homes in our Show Village Preview, starting on page 9.

Inside the convention hall, hundreds of exhibitors will be showing off thousands of products for the home building market. To help make efficient use of your time, *PB* Products Editor Nick Bajzek previews 39 products that will debut at the show in our IBS Product Guide. Check them out starting on page 19.

Finally, don't miss our educational seminar at IBS—"Design Stars: Winning Homes from the Best in American Living Awards," Wednesday, Jan. 20 at 10:00 am—on the latest design trends emerging from the 2010 BALA winners. *PB* Senior Editor Susan Bady will moderate a panel discussion with three of the BALA judges.

I hope to see you at the show!

David Barista
Editor-in-Chief
Professional Builder
dbarista@reedbusiness.com

AMERICA'S BEST TRUCK



CHEVY SILVERADO 🏆 BEST FUEL ECONOMY¹ 🏆 BEST COVERAGE IN AMERICA 🏆 VINCENTRIC'S BEST VALUE
IN AMERICA^{TM2} 🏆 A CONSUMERS DIGEST "BEST BUY" — HALF-TON MODEL 🏆 CHEVY.COM/THETRUCK 

¹Based on Silverado Hybrid model and GM Large Pickup segment. EPA est. MPG city/hwy: Silverado Hybrid 2WD (limited availability) 21/22. Silverado XFE shown 15/21. Excludes other GM vehicles. ²Based on Vincentric's 2009 Model Level Analysis of full-size pickups. Silverado is a registered trademark and Chevy is a trademark of General Motors. ©2009 General Motors. Buckle up, America!



IT'S MORE THAN A WINDOW.
IT'S A WHOLE NEW POINT OF VIEW.

At Ply Gem Windows, we have a different view for the way the window business should be run. Every window we make is designed around your needs. When you work with us you'll benefit from distinct advantages — like the broadest selection of products, nationwide availability, the right tools to help you build your business and industry leading service to help you make every window project a success.

Ready to put us to work for your business? Stop by our booth at the International Builders' Show or visit plygemwindows.com.

VISIT
IBS BOOTH N^o
3343



Windows Siding Stone Veneer Fence+Rail Designer Accents plygem.com

PLY GEM
BUILDING PRODUCTS. BUILDING SUCCESS.

For more info, go to HousingZone.com/PBinfo and enter # 23730-2



**Professional
Builder®**
SHOW VILLAGE 2010

SPECIAL SPONSORED SECTION

Show Village 2010

Three Cutting-Edge Homes Designed for Today's Home-Buyer Market

If you are planning to attend *Professional Builder's* annual Show Village exhibit at IBS next month, you'll probably notice a stark contrast between our latest generation of demonstration homes and the show homes of year's past. Gone are the multi-million-dollar designs geared toward the highest end of the home-buyer market. Gone are the 6,000-square-foot floor plans with grand staircases, luxurious master bathrooms and kitchens fit for an Iron Chef.

The 2010 edition of Show Village will showcase homes that are much more modest in size and affordable in price, reflecting the state of today's home-buyer market. The three models—Osprey, Highlander and La Linda—all fall into the \$100,000-\$250,000 price range for the models as shown; other models are available for as low as \$50,000. Floor plans range from 510 to 2,280 square feet, and are highly adaptable for a range of buyer types.

"The average size of a new single-family home has been drop-

ping for a couple of years, and we see that trend continuing," says Ron Powell, president of manufacturing for Palm Harbor Homes, which is teaming with *Professional Builder* and our sponsor partners to design and build the Show Village homes for IBS 2010. "We're responding to the market with homes that are on the affordable side, but with all the amenities today's home buyers come to expect."

All three homes are high-performance structures designed to achieve certification through NAHB's Model Green Home Building Guidelines. Sustainable features include high-performance windows, no-VOC paint and energy-efficient HVAC systems. Also, in keeping with Show Village tradition, the homes will be chock full of innovative home building products and systems—both new and tried-and-true.

Learn more about the three Show Village model homes in the following pages. And don't forget to stop by and tour these cutting-edge homes and products at the show.



Osprey



Highlander



La Linda



The **Osprey** is part of Nationwide Custom Homes' new ECO Cottages line of high-performance, green modular homes.

Go Ultra-Green for Under \$100K

Targeting both Baby Boomer and Echo Boomer buyers looking for an affordable, green weekend retreat or detached home office, the Osprey features a contemporary, stylish design and is loaded with sustainable features that can take homeowners completely off the grid. A metal roof with integral solar panels provides supplemental power to the home, while advanced lighting controls, a highly insulated envelope and Energy Star appliances and light fixtures help keep energy use to a minimum. The model's high-efficiency HVAC system is completely self-contained (no installation required) and a generator is provided for backup power. Integrated wind power and solar hot water heating are optional for off-grid applications.

Bamboo flooring highlights the interior spaces, which are highly adaptable for a range of applications and configurations.

One- and two-bedroom models are priced between \$50,000 and \$100,000.

Designed and built by Nationwide Custom Homes, a subsidiary of Palm Harbor Homes, the Osprey is part of the company's new ECO Cottages line of high-performance, green modular homes. Available in five designs (with several more in the works), the product line will be sold directly to consumers via a soon-to-be-launched Web site and promoted through strategic partnerships with consumer-targeted companies.

"By selling direct to the customer, we're able to keep prices down below \$100,000," says Andy Miller, president of Nationwide Custom Homes. "When you consider that kitchen remodels today cost as much as \$80,000, it's an extremely affordable home that is also very modern and green."

JUST THE FACTS

www.builditbetter.com

THERMOSTAT® RADIANT BARRIER ROOF SHEATHING FROM GEORGIA-PACIFIC IS QUALIFIED UNDER THE EPA “SEAL AND INSULATE WITH ENERGY STAR®” PROGRAM.

What You Don't See Matters.™



JUST THE FACTS

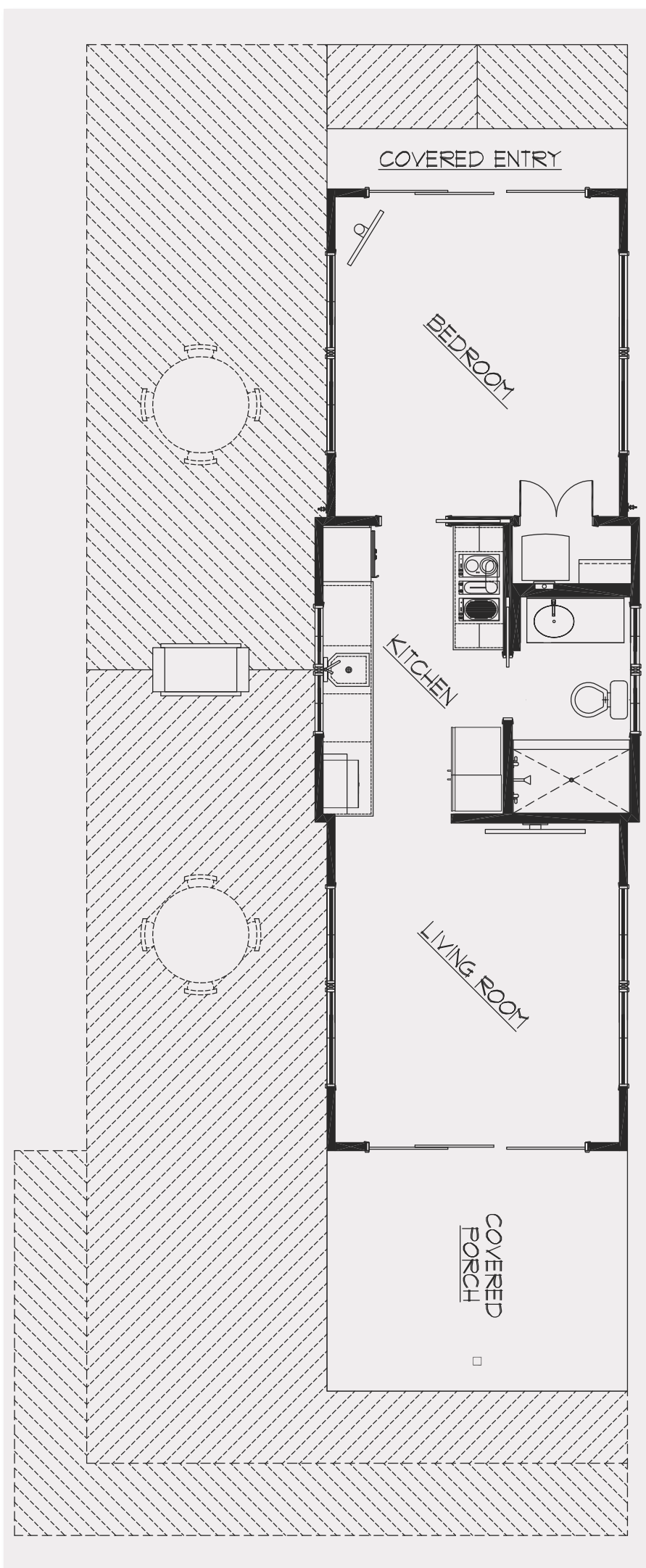
www.builditbetter.com

**GEORGIA-PACIFIC WAS THE FIRST COMPANY TO
MANUFACTURE SOUTHERN PINE PLYWOOD.**

What You Don't See Matters.™

Thermostat, What You Don't See Matters and the Georgia-Pacific logo are trademarks owned by or licensed to Georgia-Pacific Wood Products LLC.
ENERGY STAR is a registered trademark of the United States Environmental Protection Agency. ©2009 Georgia-Pacific Wood Products LLC. All rights reserved.

GP
Georgia-Pacific
Wood Products



STATISTICS & GREEN FEATURES

Statistics

- 510 square feet
- 1 bedroom, 1 bath

Energy Efficiency & High Performance

- Energy Star-rated, low-e windows ($U=0.29$, $SHGC=0.19$)
- R-21 walls, R-19 floors, R-50 ceilings
- 15.5 SEER/8.5 HSPF variable refrigerant, ductless HVAC
- Energy Star-rated appliances
- Tankless water heater
- Extensive use of compact fluorescent lighting
- Expected to meet Builders' Challenge Standards

Indoor Air Quality & Noise Reduction

- VOC source control, including zero-VOC paint
- Outside air ventilation
- Duct system sealed with mastic and fiberglass mesh
- Air filtration and cleaning system
- Central vacuum system

Other Green Building Features

- Low-flow faucets and showerheads
- Termite- and weather-resistant siding
- Resource-efficient modular construction
- Expected to meet Bronze level in all sections except lot design, preparation and development per the new NAHB National Green Home Building program
- Non-HCFC refrigerant HVAC system
- Photovoltaic and solar hot water "ready"
- Designed for future expansion (modules can be added)
- Builder is a Building America partner and Builders Challenge participant

See the latest building products installed and in action from these premier sponsors:

Windows and patio doors: Andersen Windows and Doors

Insulation: BASF

Interior and exterior paint: BEHR

Metal roof: Custom-Bilt

Sheathing: Dow Building Solutions

Central vacuum system: Beam

Appliances: Gaggenau

Generator: Generac

Blowing agent: Honeywell

Bathtub: Lasco Bathware

Nails: Maze Nails

Cabinetry: Merillat

HVAC: Mitsubishi

Faucets and showerhead: Moen Inc.

Outdoor fireplace: Rinnai

Tankless water heater: Rinnai

Weather-resistant wood: Viance

Sewer systems: Environment One



The Highlander's cabin-like aesthetic is designed to fit in virtually any vacation or weekend home setting, whether mountainous, woody or coastal.

Casual Mountain Retreat

Priced between \$90,000 and \$185,000, the Highlander is an affordable, sustainable option for both Baby Boomers and retirees looking for a casual mountain retreat or coastal getaway. The two-story, 1,780-square-foot home features a loft on the second floor and a modern lodge motif with natural state elements, russet tones and a warm cedar shake exterior. Natural stone, glass mosaics and copper fixtures and finishes will be featured throughout the home.

"This would make a great vacation home or weekend home," says Rick Boles, president of Palm Harbor Homes, Phoenix Division, which is designing and building the modular home for the Show Village exhibit. Boles says that, even with its high-end finishes and

classic aesthetic, the model home was designed with today's budget-conscious buyer in mind. Even the entry-level option comes standard with the second story (unfinished) and includes all standard options. "It's extremely affordable because it's systems-built," says Boles.

The Highlander is also designed and built to achieve certification through NAHB's Model Green Home Building Guidelines. Sustainable features include a high-velocity, low-energy HVAC system, dual-pane low-e casement windows, tankless water heater, low-flow plumbing fixtures and recycled wood products (see sidebar on page 14 for more sustainable features).

ONE FAUCET. ONE **DIAMOND™** VALVE. FIVE MILLION USES.



DIAMOND™ Seal Technology combines a durable DIAMOND Valve with InnoFlex® PEX waterways for no leaks and a longer life. The DIAMOND Valve features a disc embedded with real diamonds to last up to ten times longer than the industry standard*. And the threat of leaks is all but eliminated, thanks to the one-piece InnoFlex PEX supply lines. Once inside the faucet, water is not in contact with metal contaminants. Durability you can count on. Another way that Delta is more than just a faucet.

diamondsealtechnology.com

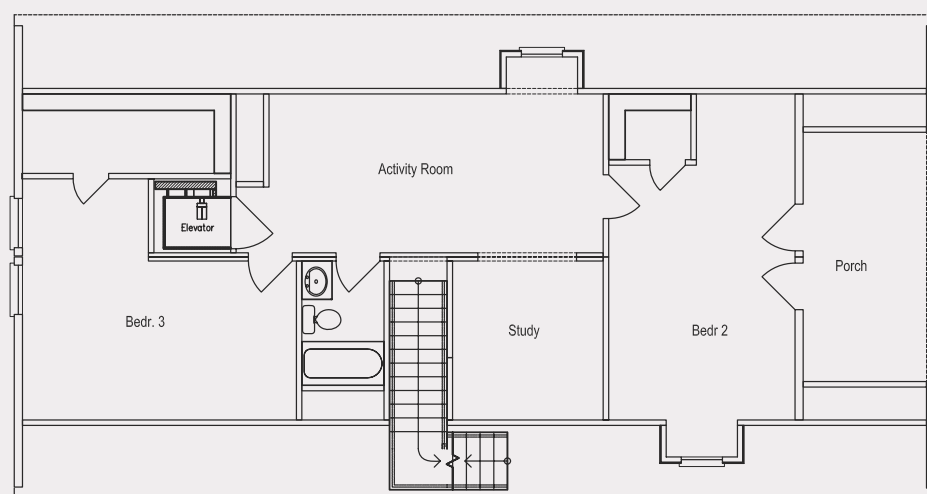


see what Delta can do™

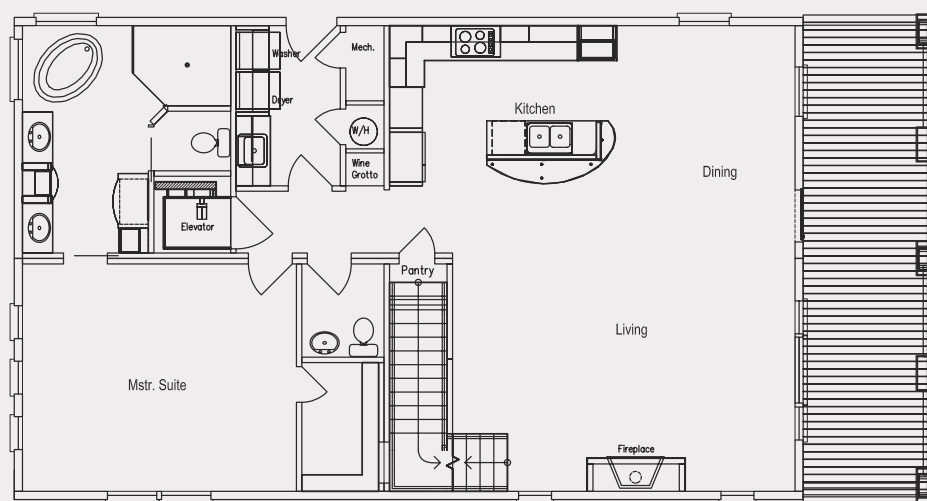


*Industry standard based on ASME A112.18.1 of 500,000 cycles.

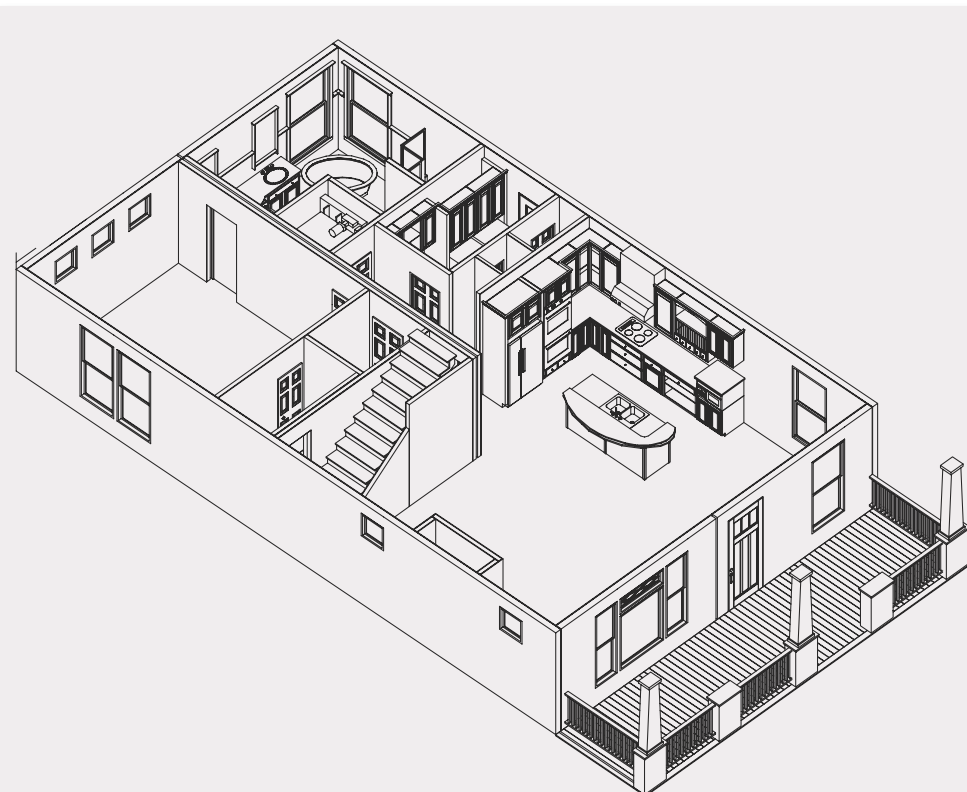
For more info, go to HousingZone.com/PBinfo and enter # 23730-3



Proposed Cape floor



HIGHLAND
COPYRIGHT © 2009 PALM HARBOR HOMES INC.



STATISTICS & GREEN FEATURES

Statistics

- 1,780 square feet
- 3 bedroom, 2.5 bath

Energy Efficiency & High Performance

- Energy Star-rated, low-e windows (U=0.29, SHGC=0.29)
- R-19 walls, R-21 floors, R-38 ceilings
- 15 SEER /8.5 HSPF packaged heat pump
- Duct system performance tested
- Energy Star-rated appliances
- Tankless water heater
- Extensive use of compact fluorescent lighting
- Expected to meet Builders' Challenge Standards with an Energy Smart Home E-Scale of 62

Indoor Air Quality & Noise Reduction

- VOC source control, including zero-VOC paint
- Phenol- and formaldehyde-free insulation
- Outside air ventilation
- Ducts sealed with mastic and fiberglass mesh
- Air filtration and cleaning system

Other Green Building Features

- Class 1 (A) fire-rated siding
- Earth-friendly pest control with mold preventative
- Resource-efficient modular construction
- Expected to meet Bronze level in all sections except lot design, preparation and development per the NAHB National Green Home Building program
- Non-HCFC refrigerant HVAC system
- California Title 24-compliant
- Builder is Building America partner and Builders Challenge participant

See the latest building products installed and in action from these premier sponsors:

Windows, patio doors: Andersen Windows and Doors

Interior and exterior paint: BEHR

Appliances: Bosch Home Appliances

Sheathing: Dow Building Solutions

Central vacuum system: Beam

Indoor fireplace: Heatilator

Insulation: Knauf

Locks: Kwikset

Bathtubs: Lasco Bathware

Stairs: Leeper Stair Products

Decking and rails: LifeTime Lumber

Nails: Maze Nails

Cabinetry: Merillat

Pest control: Nisus Corporation

Tankless water heater: Rinnai

Exterior doors: Simpson Door

Siding: The Tapco Group - Foundry

Stone: The Tapco Group - StoneCraft

Roofing: The Tapco Group - InSpire

Elevator: ThyssenKrupp Access

Caulk: GE Sealants

Plan and estimating services: Simpad Inc.



Change your frame
of reference.

New SD9 and SD10 Structural-Connector Screws

Simpson Strong-Tie introduces the Strong-Drive® (SD) screw for use with structural connectors. As an alternative to nails, the load-rated SD9 and SD10 screws have been tested and approved for use in many popular Simpson Strong-Tie® connectors. In certain applications screws are easier and more convenient to install than nails, and the single-fastener load values achieved by the SD9 and SD10 exceed those of typical 10d common or 16d common nails, respectively. In addition, the galvanized coating makes the SD screw ideal for interior and most exterior conditions.



- The SD screw features an optimized shank which is specifically designed to match the diameter of the fastener holes in Simpson Strong-Tie connectors.
- The hex head virtually eliminates cam-out and helps avoid stripping of the head.
- The sharp point of the screw enables fast starts, and the patented serrated threads reduce torque for improved drivability.

New Steel Strong-Wall® Garage Portal Kit

The new Simpson Strong-Tie® Garage Portal Connection Kit improves the performance of standard Steel Strong-Wall® shearwalls in a garage portal application. It provides extra strength and rigidity at the connection between the shearwall and the header, resulting in higher loads and reduced concrete anchorage requirements.



- The kit (model SSWP-KT) includes 2 straps and self-drilling fasteners to attach the strap to the shearwall. (10dx2 1/2" nails for the strap-to-header connection not included)
- It uses the standard Steel Strong-Wall anchor-bolt template.



In the past moment frames were the expensive option when designers wanted narrow wall sections and open floor plans. The Simpson Strong-Tie® Strong Frame™ ordinary moment frame is changing that by offering engineered moment frame solutions complete with anchorage designs. Now designers can spend minutes choosing a pre-engineered moment frame rather than hours designing one. And since the Strong Frame moment frame installs with 100% bolted connections, it is easier for contractors to handle and install.

For more information, see our webinar at www.strongtie.com/sfwebinar.

To view and request a copy of the *Strong Frame Ordinary Moment Frame* catalog, visit www.strongtie.com or call (800) 999-5099.

SIMPSON
Strong-Tie



Designed for the traditional American neighborhood, the La Linda features a natural, Prairie-style aesthetic, with earthy tones and multiple roof lines.

American Beauty, Prairie-Style

The largest of the three Show Village homes at 2,280 square feet, the La Linda is a single-story ranch home designed in the traditional American Prairie style. Adorned with rich, warm metals, natural textures and an earthy color palate accented by oxblood red and other colors made popular by the Prairie-style movement, this home would be welcomed in any American neighborhood.

The design is quite sophisticated, with multiple roof lines, intersecting angles and complex porch details—all of which are carefully constructed in a factory setting.

“The appeal to our customers is that they don’t have a lot of onsite construction to contend with,” says Ron Powell, president of manufacturing with Palm Harbor Homes Inc., the home’s builder. “That means the home can be delivered to the consum-

er with a great look at a very attractive price.” Powell says the La Linda is priced from \$99,000 with standard options up to \$250,000 with all the bells and whistles.

Like the other Show Village 2010 homes, the La Linda is designed to achieve certification through NAHB’s Model Green Home Building Guidelines. The model comes standard with a robust insulation package providing R-38 in the roof/ceiling, R-19 in the walls and R-22 in the floors (higher insulation packages are available). Rooftop solar panels will provide supplemental power, while Energy Star-rated appliances, a tankless water heater and high-efficient lighting and HVAC systems will help minimize energy demand (see sidebar on page 18 for more sustainable features).

2010

THE POWER OF **YELLOW**.®

Your ticket to the **BEST** game in town!

THE PRO EXPO Presented by Pella is coming to 30 markets — including yours! This all-star event delivers the best in industry awareness of the latest product innovations, education workshops — and an MVP experience! Come learn how **The Power Of Yellow** will help keep you on top of your game in 2010.

THE **PRO** EXPO

PRESENTED BY



Atlanta • Boston • Charlotte, NC • Chicago
Cincinnati • Cleveland • Columbus, OH • Denver
Des Moines, IA • Detroit • Grand Rapids, MI
Green Bay, WI • Kansas City, MO • Los Angeles
Milwaukee • Minneapolis • Nashville, TN
New York City • Philadelphia • Phoenix • Pittsburgh
Portland, OR • Richmond, VA • Salt Lake City
San Diego • San Francisco • Seattle • St. Louis
Toronto • West Caldwell, NJ

THE ALL★STAR EVENT

GATE B

MVP BOX

SEC
9

ROW
34

SEAT
2

Register now!

www.thePROEXPO.com

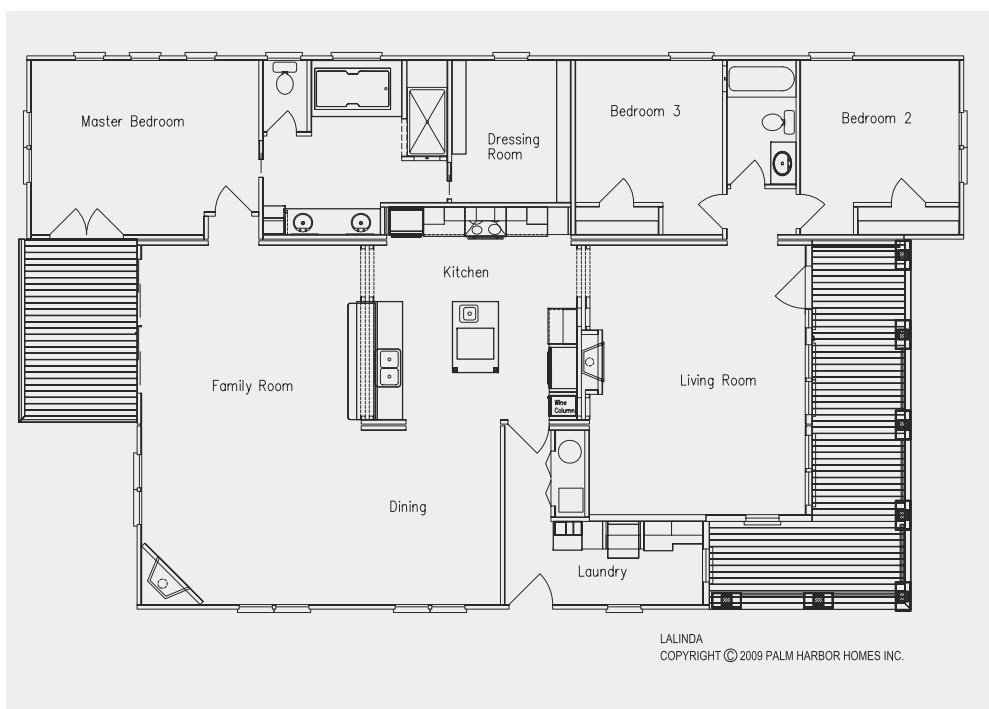
888-644-EXPO



VIEWED TO BE THE BEST.®

For more info, go to HousingZone.com/PBinfo and enter # 23730-5

© 2009 Pella Corporation



STATISTICS & GREEN FEATURES

Statistics

- 2,280 square feet
- 3 bedroom, 2 bath

Energy Efficiency & High Performance

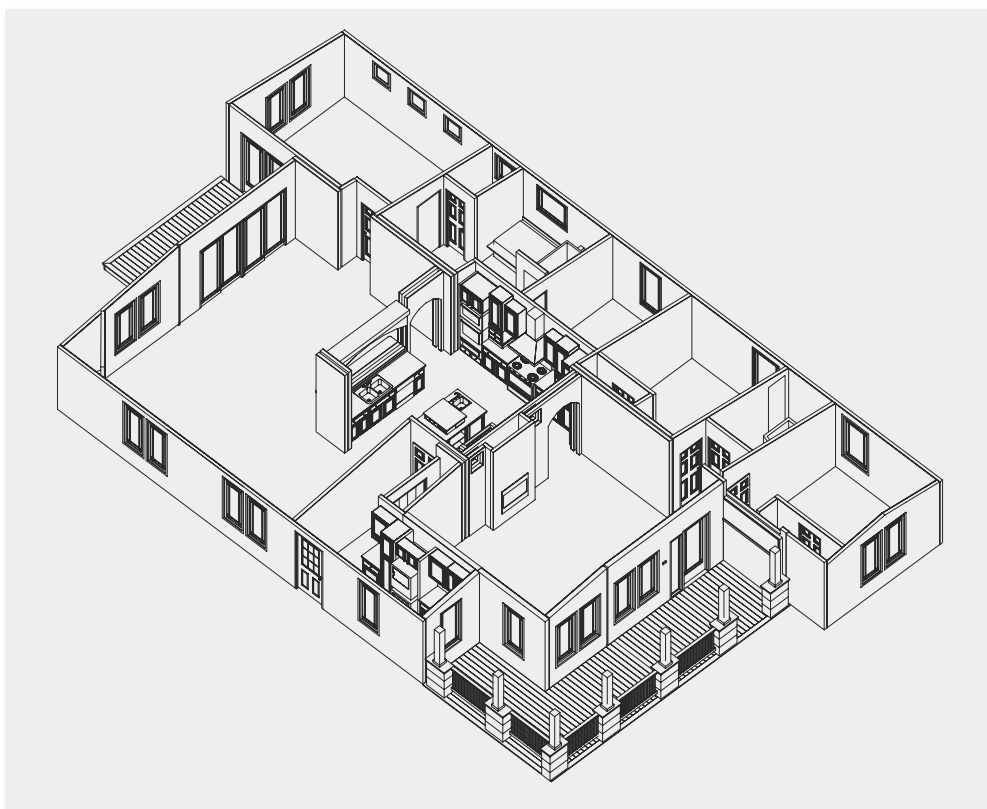
- Energy Star-rated, low-e windows (U=0.29, SHGC=0.29)
- R-19 walls, R-21 floors, R-38 ceilings
- 15 SEER/8.5 HSPF packaged heat pump
- Duct system performance tested
- Energy Star-rated appliances
- Tankless water heater
- Extensive use of compact fluorescent lighting
- Z-wave (wireless) technology for remote energy and access home management
- Expected to meet Builders' Challenge Standards with an Energy Smart Home E-Scale of 67

Indoor Air Quality & Noise Reduction

- VOC source control, including zero-VOC paint
- Outside air ventilation
- Duct system sealed with mastic and fiberglass mesh
- Air filtration and cleaning system
- Central vacuum system

Other Green Building Features

- Low-flow faucets and showerheads
- Class 1 (A) fire-rated siding
- Resource-efficient modular construction and waste management
- Expected to meet Bronze level in all sections except lot design, preparation and development per the new NAHB National Green Home Building program
- Non-HCFC refrigerant HVAC system
- California Title 24-compliant
- Builder is Building America partner and Builders Challenge participant



See the latest building products installed and in action from these premier sponsors:

Windows, patio doors: Andersen Windows and Doors

Interior and exterior paint: BEHR

Sheathing: Dow Building Solutions

Central vacuum system: Beam

Appliances: Thermador Home Appliances

Indoor fireplace: Heatilator

Insulation: Icynene

Lighting: Kichler Lighting

Bathtubs: Lasco Bathware

Decking and rails: Genova Products

Remote access system: Schlage

Faucets and showerheads: ShowHouse

Nails: Maze Nails

Cabinetry: Merillat

Tankless water heater: Rinnai

Stone: The Tapco Group - StoneCraft

Roofing: The Tapco Group - InSpire

HVAC: Trane

JUST THE FACTS

www.builditbetter.com

**I-JOISTS FROM GEORGIA-PACIFIC MINIMIZE THE EFFECTS OF SHRINKING,
TWISTING, AND WARPING THAT CAN LEAD TO UNEVEN, SQUEAKY FRAMING.**

What You Don't See Matters.™



Georgia-Pacific
Wood Products

JUST THE FACTS

www.builditbetter.com

**PLYTANIUM® PLYWOOD IS 10% STIFFER THAN OSB, HELPING
REDUCE THE PROBABILITY OF CERAMIC TILE CRACKING.**

What You Don't See Matters.™



Georgia-Pacific
Wood Products

Plytanium, What You Don't See Matters, and the Georgia-Pacific logo are trademarks owned by or licensed to Georgia-Pacific Wood Products LLC.
©2009 Georgia-Pacific Wood Products LLC. All rights reserved.



B GENOVA PRODUCTS



D CERTAINTED



C DANVER

A MOISTURESHIELD

WE DON'T NEED NO WATER **A**

MoistureShield's new fire-rated decking, MoistureShield FR, has been approved by the California Department of Forestry and Fire Protection. MoistureShield Solid provides the strength of the company's composite decking with a new profile option. The boards sport a deep-embossed wood grain texture on both sides, so take your pick!

Booth N1831

For more info, go to HousingZone.com/PBinfo and enter # 251

PVC RAILING HAS MUSCLE **B**

Genova Products recently released its color-matched PVC Railing on the company's Genovations Decking line. Aluminum channels support the top and bottom rails with die-cast metal brackets, eliminating the need for extra support brackets. The PVC bracket covers all hardware for a picture-perfect presence.

Booth N1131

For more info, go to HousingZone.com/PBinfo and enter # 252

DINING AL FRESCO **C**

Outdoor living is all the rage. Give your homeowners an excuse to cook outside with Denver's stainless steel outdoor kitchen cabinetry. The line is made to be designer-friendly with flexible design configurations, including base cabinets available in three-inch increments from 12 to 48 inches wide and wall cabinets from 12 to 42 inches in various heights.

Booth N1014

For more info, go to HousingZone.com/PBinfo and enter # 253

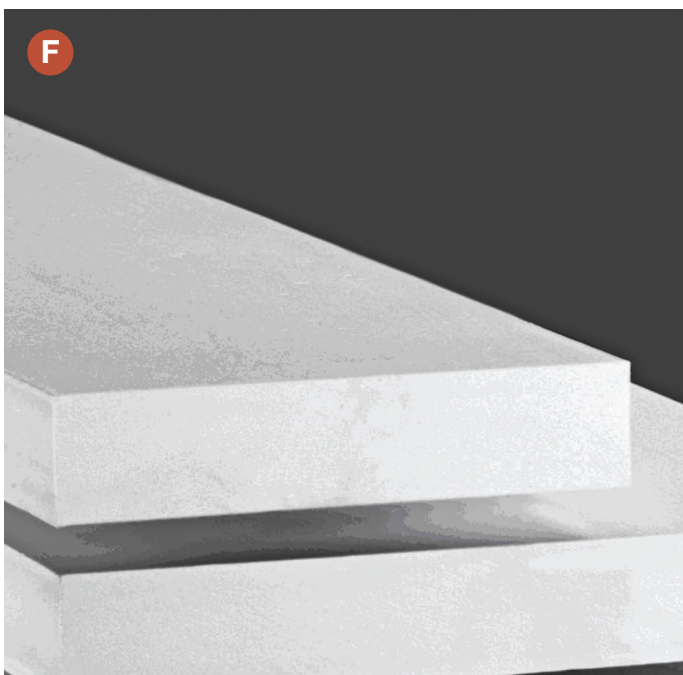
FOREVER NEW **D**

Consisting of a solid cPVC core, EverNew LT cellular PVC decking never needs painting or staining and it will not splinter, warp or rot. CertainTeed's product has a patent-pending, fusion-bonded Lumenite surface technology for protection against the elements. The surface is also solar-reflecting, so your boards will stay cool, even on hot days.

Booth C2026

For more info, go to HousingZone.com/PBinfo and enter # 254

ROYAL



STEALTHY BOARDS **E**

Need to beat weather extremes while meeting ground clearance codes? Versatex's PVC Stealth Skirt Board—a multi-purpose frieze board or starter strip—fits the bill. The 1¼-inch-thick plank features an angled top ridge for the first course of fiber cement or composite siding to rest upon. The board comes in 6- and 8-inch widths and in 18-foot lengths.

Booth N3019

For more info, go to HousingZone.com/PBinfo and enter # 255

TRIMMING DOWN **F**

Enjoy all the benefits of dimensional lumber without worrying about the elements. Royal S4S Trimboard from Royal Mouldings is available in three standard thicknesses, five standard widths and standard 18-foot and custom lengths. The trimboard is available in both smooth/ smooth and reversible woodgrain/smooth finishes.

Booth N2470

For more info, go to HousingZone.com/PBinfo and enter # 256



GROOVY PANELS **G**

Nichiha's new Stucco and Grooved panels are made using the same process as the company's NichiBoard lap siding. During the manufacturing process, Nichiha applies texture with heat and over one million pounds of pressure, creating deeper, more authentic textures and crisper, cleaner edges.

Booth C3118

For more info, go to HousingZone.com/PBinfo and enter # 257

SAME AS IT EVER WAS **H**

When builders and contractors specify Custom-Bilt Metals' FusionSolar with a standing-seam roof, they get a complete system. It ships with all necessary components, detailed schematics and specifications for wiring and electrical components that an electrical subcontractor needs for installation. No specialized solar installer expertise is required.

At Show Village

For more info, go to HousingZone.com/PBinfo and enter # 258

The design is fun. The schedule is always serious.

When you're constructing the latest ride for a theme park, everything needs to be exactly right. Nextel Direct Connect® puts the team on the cranes in touch with the team on the ground in under a second. Keeping everyone working together right now, so the only surprises on this ride are the ones called for in the design.

Nextel Direct Connect.® Only on the Now Network.™

1-800-NEXTEL-9 sprint.com/nextel



**THE FASTEST NATIONAL
PUSH-TO-TALK NETWORK.**
Connecting the world's largest
push-to-talk community.

i576 by Motorola



For more info, go to HousingZone.com/PBinfo and enter # 23730-6



J
AZEK



FOUNDRY STONE **L**



N
PLY GEM



I NISUS



K LIFETIME LUMBER



M SHERWIN-WILLIAMS

KEEPING CRITTERS AT BAY **I**

The National Green Building Certification program of NAHB recently chose Nisus' Bora-Care as one of its first certified Green Approved Products for new construction termite prevention. The non-toxic formula lets builders shy away from harsh soil treatments and can add extra green building points to projects.

Booth C5428

For more info, go to HousingZone.com/PBinfo and enter # 259

NO STAINS HERE **J**

Introducing the Azek Deck Terra Collection. The new colors answer strong consumer demand for the stain and scratch resistance of the company's deck line in darker shades. Kona is a rich chocolate brown shade resembling the gourmet

Kona coffee bean. Fawn is a deep tan with warm golden-amber hues. Both new colors are available in 5½-inch-wide boards in 12-, 16- and 20-foot lengths.

Booth C4781

For more info, go to HousingZone.com/PBinfo and enter # 260

IT'LL LAST A LIFETIME **K**

LifeTime Lumber is a low-maintenance, eco-friendly and fire-resistant deck, dock and fence material. The wood-alternative lumber is made from inert material recovered from the electric power generation industry mixed with fly ash and polyurethane.

At Show Village

For more info, go to HousingZone.com/PBinfo and enter # 261

L WON'T CRACK UNDER PRESSURE

Five-foot lengths and a patent-pending locking system make Foundry Stone's new panels a snap to install. The siding's performance includes the characteristics inherent in all Foundry Shake and Shingle siding: Class-A fire protection, Miami-Dade wind resistance and a proprietary ASA resin cap for enhanced UV and weathering protection.

Booth C3513

For more info, go to HousingZone.com/PBinfo and enter # 262

ALREADY FINISHED **M**

Prefinishers of exterior siding know the benefits of factory-finished siding. Sherwin-Williams knows this too, hence the new SuperPaint Advanced Machine

Finish. The line is formulated to work even better with roller coating, curtain coating and vacuum coating equipment. It provides superior hide and adhesion to both wood and fiber cement.

Booth C3185

For more info, go to HousingZone.com/PBinfo and enter # 263

DON'T GET CAUGHT NAPPING **N**

Insulated siding can increase your wall systems' R-value by as much as 25 percent. NAPCO by Ply Gem combines vinyl siding and closed-cell expanded polystyrene foam insulation for that extra level of comfort for your homeowners. American Essence is available in 14 standard colors and four Premium Signature Series Colors with extra UV and sun protection.

Booth C3343

For more info, go to HousingZone.com/PBinfo and enter # 264

JUST THE FACTS

www.builditbetter.com

NAUTILUS™ WALL PANEL ASSEMBLIES MEET THE STRINGENT WATER RESISTANCE REQUIREMENTS OF THE INTERNATIONAL BUILDING CODE, WITH CONDITIONS THAT SIMULATE SUSTAINED 50 MPH WIND-DRIVEN RAINS.*

What You Don't See Matters.™

*IBC §1403.2, Weather Protection

GP

Georgia-Pacific

Wood Products

JUST THE FACTS

www.builditbetter.com

9 OUT OF 10 HOMES TODAY ARE BUILT WITH WOOD.

What You Don't See Matters.™

Nautilus, What You Don't See Matters, and the Georgia-Pacific logo are trademarks owned by or licensed to Georgia-Pacific Wood Products LLC.
©2009 Georgia-Pacific Wood Products LLC. All rights reserved.


Georgia-Pacific
Wood Products

viega

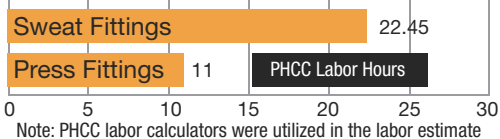
Press technology... the inside story.

Visit us at
IBS Booth #C2919
& AHR Booth #3338.

Why use Press Fittings over Sweat Fittings?

In the study below it took 50% less time to install a typical restaurant bathroom with press technology over sweating fittings. This will allow for jobs to be completed quicker, on time or ahead of schedule.

Press Fittings vs. Sweat Fittings

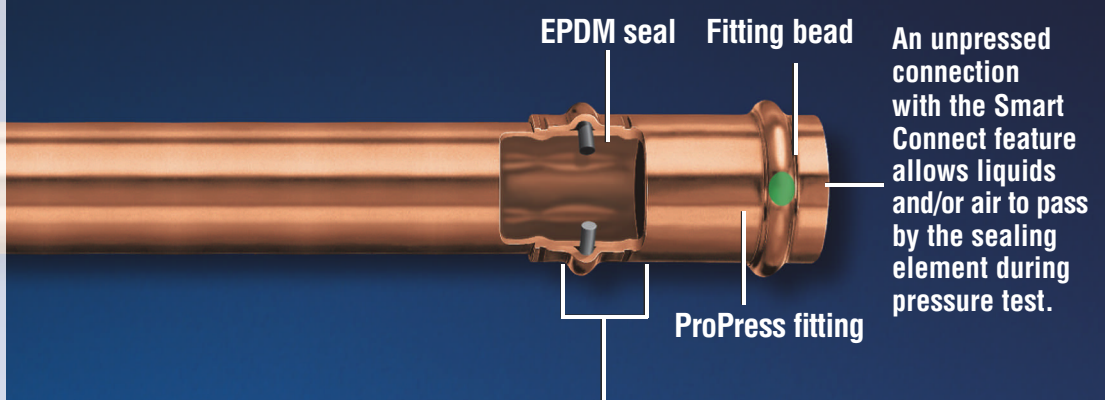


Only Viega ProPress fittings and valves offer the Smart Connect® feature, a quick and easy way to identify connections that need pressing.

During pressure testing, water or air flows past the sealing element indicating an unpressed fitting. The Smart Connect feature has assured millions of leak-free connections for water and gas applications. ProPress is approved for potable water, fuel gas, marine and stainless steel applications. Viega ProPress fittings carry a 50-year warranty for copper.

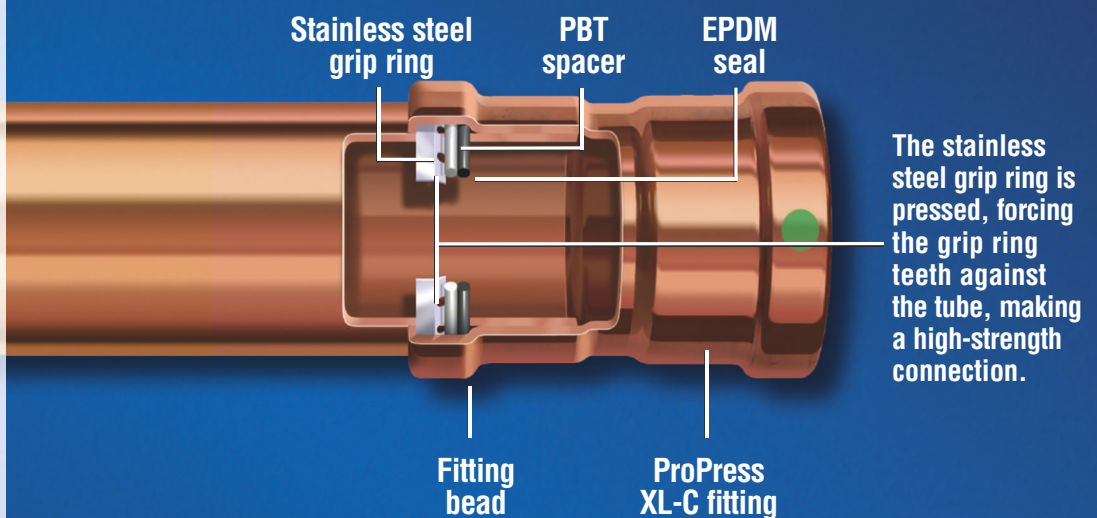
For more information see our white paper on back or contact us at **1-800-976-9819**.

ProPress 1/2" to 2" fittings.

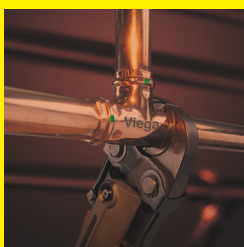


Pressed connection is pressed in front of, on top of, and behind the seal making a gas or water-tight seal. The Smart Connect feature is sealed during pressing.

ProPress XL-C 2-1/2" to 4" fittings.



Viega ... The global leader in plumbing and heating systems.



W W W . V I E G A . C O M

1 - 8 0 0 - 9 7 6 - 9 8 1 9

For more info, go to HousingZone.com/PBinfo and enter # 23730-7



LESS MILES. MORE GALLONS.



Get Behr® paint, with exceptional quality and coverage, delivered fast and free to your jobsite.

Forget all the running around. Place your order for **Behr** paint or stain at the Home Depot when stocking up for your next job. **Behr** will expedite delivery to your jobsite—at no extra charge.

With volume pricing, one-stop shopping and precision-color tinting, **Behr** saves you time and money while providing the quality you demand.

For more information about the **Behr Direct To ProSM** program, visit your nearest Home Depot Pro Desk.

BEHR 
DIRECT TO PRO

Available
exclusively at:



See what **Behr** services are available in your area by visiting behrpro.com/pbp.

Visit us at Behr/Masco booth C4143.

For more info, go to HousingZone.com/PBinfo and enter # 23730-8



B DUPONT



C DANZE



E HACKER INDUSTRIES



A

GERBER



D WHIRLPOOL

WHAT A SUITE DEAL **A**

It's a great neighborhood in ChiTown and also the name of Gerber's new bathroom suite. The Wicker Park suite features a host of products, including the company's line of high-efficiency toilets. HETs are available in Gerber's ADA-compliant Elongated and ErgoHeight bowls with 12-inch rough-in configurations. The toilets come with 3-inch flush valves and are fueled by Gerber's XP-3 Flushing technology with dual feed jets.

Booths C4813, C5412

For more info, go to HousingZone.com/PBinfo and enter # 265

SOLID NEW COLORS **B**

Like the new colors? We do, too. DuPont's new Corian solid surface offerings can be used in a variety of applications, including kitchen and bathroom countertops, backsplashes, wet bars, tub decks and tub and shower surrounds. Like its predecessors, these Corian surfaces are nonporous and, with proper cleaning, do not promote the growth of mold, mildew or bacteria.

Booth C3311

For more info, go to HousingZone.com/PBinfo and enter # 266

UP ON A PEDESTAL **C**

Danze scaled back the latest additions to the Cirtangular Collection in favor of compact, 24-inch-wide vanities and mirrors. Choices include the aforementioned 24-inch pedestal basin, the Cirtangular-Bru-

lee 24-inch vanity and mirrored cabinet and the Cirtangular-Knightsbridge vanity and mirrored cabinet. The collection has matching water-efficient toilet designs available in both 1.6 gallons per flush (gpf) and 1.28 gpf versions.

Booth C4813

For more info, go to HousingZone.com/PBinfo and enter # 267

HEAT THINGS UP **D**

Half the energy, the same great performance. The new Whirlpool Gold free-standing double oven uses the same cutout space as a range (6.3 cubic feet) and allows homeowners can bake two separate items at different temperatures simultaneously. The double oven range is available in white, black and stainless steel.

Booth C3543

For more info, go to HousingZone.com/PBinfo and enter # 268

FIRMLY IN PLACE **E**

Higher-density projects will be the norm in many markets. With that in mind, Hacker Industries has a new gypsum concrete floor underlayment in the Firm-Fill CMD. It is specifically designed for steel-frame projects that utilize corrugated steel decking. The underlayment is significantly lighter than traditional poured-in-place concrete, so you'll reduce dead loads and related steel framing costs.

Booth N1253

For more info, go to HousingZone.com/PBinfo and enter # 269



NOTHING SELLS A HOME FASTER than adding cost-effective, energy-efficient insulation and weatherization products. That's what you get when you add Dow Building Solutions to your team. Our broad portfolio of energy-efficient sheathing, housewraps, spray foam insulation and accessories is backed by 65+ years of building science experience and industry knowledge. It's building performance you can measure – in lower utility bills for homeowners, fewer call backs and increased referrals.

Come visit us at IBS 2010 Booth C4113 and ask us about our new cold-weather formulation STYROFOAM™ Brand Spray Polyurethane Foam Insulation – RS 2030. The advanced formulation is easy to use and delivers consistent foaming performance inside, even when the snow is falling outside.



www.insulateyourhome.com

www.dowsis.com

THE HARDEST WORKING TEAM IN THE BUILDING INDUSTRY

STYROFOAM Brand Spray Polyurethane Foam should be installed by a trained spray foam applicator wearing protective clothing, gloves, goggles and proper respiratory protection. Refer to product information sheet and installation guidelines for details. Consult the instructions and Material Safety Data Sheet carefully before use.

®™ Trademark of The Dow Chemical Company ("Dow") or an affiliated company of Dow

For more info, go to HousingZone.com/PBinfo and enter # 23730-9



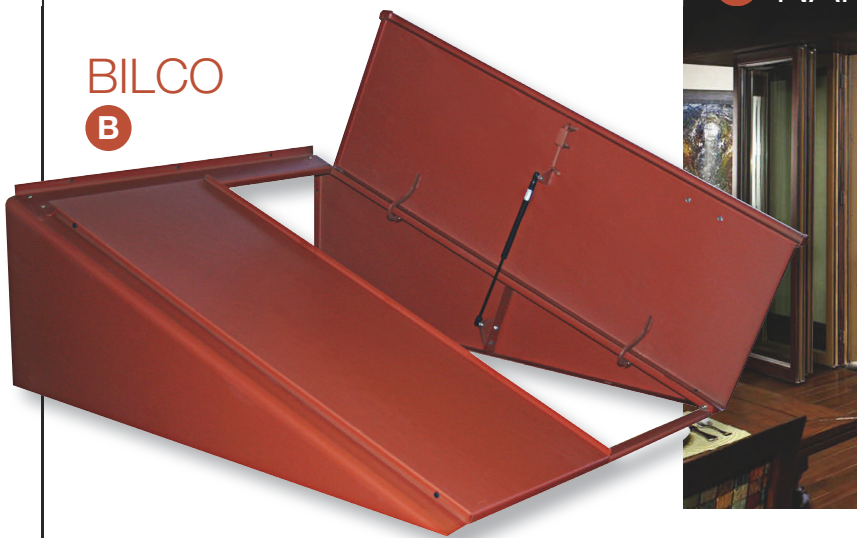


A SIMPSON



C ANDERSEN

**L.E. JOHNSON
E**



**BILCO
B**



D NANAWALL

CAN'T IMITATE THESE **A**

Simpson is expanding options for its exterior french and sash doors and sidelights with its latest innovation, the Simulated Divided Lite (SDL). Simpson SDL doors capture the elegance of a true-divided lite in a single insulated glass unit, allowing doors to achieve higher energy efficiency ratings and meet hurricane and design pressure requirements.

Booth C3374

For more info, go to HousingZone.com/PBinfo and enter # 270

NOTHING BEATS A CLASSIC **B**

2010 is a special year for Bilco. The

company will celebrate the 75th anniversary of its Classic Series steel basement door by introducing an improved model at the show. The door features a patented gas-spring lift-assistance design and improved primer finish for weather resistance.

Booth N1037

For more info, go to HousingZone.com/PBinfo and enter # 271

YOU GET AN A-PLUS **C**

A-Series casement, awning, double-hung and picture windows are all available for the 2009 American Recovery and Reinvestment Act tax credit. These new Andersen windows have a wide swath of glass options to choose from, such as the company's HP Low-

E4 glass made with grilles, no grilles, or SDL grilles. The windows come with a host of accessories to complement the exterior trim.

Booth C3557

For more info, go to HousingZone.com/PBinfo and enter # 272

PANELED PERFECTION **D**

The NanaWall VSW65 Single Track Slider is a wood-framed, individual panel single sliding system that makes large openings (up to four feet across per panel) possible. With its single track, the custom system provides a clean line for a seamless transition from inside to outside. The VSW65 is easy to operate and can be designed to slide into a pocket.

Booth C5363

For more info, go to HousingZone.com/PBinfo and enter # 273

POCKET PROTECTOR **E**

L.E. Johnson Products has a winner in the Series 2060 heavy-duty pocket door frame that accommodates doors weighing up to 300 pounds. The 2060 features sturdy, all-steel studs that produce walls that are as rigid and stiff as a wood 2x4. The steel studs are fabricated from extra-thick, 16-gauge, zinc-coated steel and measure 1 1/4 inches deep by 1 1/4 inches wide.

Booth N2176

For more info, go to HousingZone.com/PBinfo and enter # 274

where

MIND MEETS MUSCLE.

COMMERCIAL
TRUCK
SEASON



Get up to \$1,500 in upfit assistance on E-Series and F-Series Super Duty® chassis cabs and up to \$2,000 in upfit assistance on F-650/F-750 chassis cabs.* Act soon to get up to \$375 in upfit assistance on Transit Connect vans, all during Commercial Truck Season Year-End Sell-Down.



Commercial Truck Season is your best chance to save on the most versatile and capable line of trucks on the road. Nobody sells more commercial trucks than Ford – 24 years and counting. See what we can do for you at commtruck.ford.com.



HURRY, OFFER ENDS 1/4/10.

*Available on upfits costing \$1,200 or more. Take delivery from dealer stock between 11/3/09-1/4/10. Restrictions apply. To be eligible for up to \$375 upfit assistance, Transit Connect unit must contain a ship-thru code of 31C or 31D. Non-ship-thru orders are only eligible for a maximum of \$200 upfit assistance on upfits costing \$200 or more. See dealer for complete details.

For more info, go to HousingZone.com/PBinfo and enter # 23730-10



ENTER PLEASE F

The new interior doors from Marvin Entry Doors have the same custom capabilities as entry doors for a complete home package. Made of solid wood, customers can choose any of the seven architectural styles offered. Optional FSC-certified Honduran Mahogany and Cedro Macho can be specified. The swinging interior doors are offered as single and double doors.

Booth C4633

For more info, go to HousingZone.com/PBinfo and enter # 275

DESIGNED WITH THE DESIGNER IN MIND G

The sharp-looking Designer Series

windows and patio doors from Pella feature the company's exclusive snap-in between-the-glass blinds, fabric shades, decorative panels and removable grilles that are easy to change. The Designer Series windows and patio doors are the only Pella products available with triple-pane glass.

Booth C1515

For more info, go to HousingZone.com/PBinfo and enter # 276

SAFE AND SECURE H

With SecureKey, only a unique reset key can be used to rekey the cylinder. Schlage's new hardware features the SecureKey cylinder that allows builders and homeowners to rekey the lock in seconds without removing it from the door. This ANSI Grade 1, BHMA-certified

cylinder is bump- and pick-resistant.

Booth C3142

For more info, go to HousingZone.com/PBinfo and enter # 277

SILVER LINING I

Integrity's new low-e coatings include the LoE-366, which uses three layers of silver oxide to keep heat inside during the winter and outside during the summer. LoE-366 glass has an improved U-value and solar heat gain coefficient, and provides 66 percent light transmittance for improved solar and UV management.

Booth C4633

For more info, go to HousingZone.com/PBinfo and enter # 278

THOSE IN GLASS HOUSES... J

The Sliding Glass Door Series 670 and 770 from PGT lets builders and installers reconfigure the door in the field with minimal time and money. The sliding door panel interlocks are interchangeable and reversible and can be switched from a standard stack to a reverse stack. Doors are offered from one panel up to eight panels as by-pass, pocket or corner doors, ranging in size from 6 feet, 8 inches up to 10 feet.

Booth C1526

For more info, go to HousingZone.com/PBinfo and enter # 279



PROTECTING YOUR HOME
while you're at work is no small concern

Don't be alarmed,
BuyerZone is at your fingertips.

Compare features and price quotes on Home Security Systems today. Save time and money, compare/rate suppliers, and protect your investment with BuyerZone. At BuyerZone, you're in control. We're just here to make your work easier.

Join the millions who've already saved time and money on many of their Home Security System purchases by taking advantage of BuyerZone's FREE, no obligation services like:

- Quotes from multiple suppliers
- Pricing articles
- Buyer's guides
- Supplier ratings
- Supplier comparisons

REQUEST FREE QUOTES NOW!

Call (866) 623-5529 or visit
BuyerZoneHomeSecurity.com

BuyerZone
Where Smart Businesses Buy and Sell

A division of
 Reed Business Information.

99% on-time delivery :: 7 manufacturing plants :: 45 years of proven performance



The Tapco Group® :: Innovation Born from Original Thinking™

We innovate for a living. That's why The Tapco Group has the most comprehensive line of authentic looking exterior products designed to perform to the highest standards for contractors. With over 45 years of manufacturing experience contractors can trust Tapco Group products to install easier, perform better and deliver the widest array of color and design options in the industry. We innovate for a living and manufacture products that will work hard for years to come. Innovate today.

© 2009 Headwaters



Innovative Exterior Products™

www.theTapcoGroup.com

ROOFING :: SIDING :: SHUTTERS :: SIDING COMPONENTS :: TOOL SYSTEMS :: EGRESS SYSTEMS :: TRIM :: STONE VENEER

**Please visit The Tapco Group at
IBS Booth #C3513**

For more info, go to HousingZone.com/PBinfo and enter # 23730-12





COLOR ME LED **A**

Cooper Lighting's Halo LED downlighting line includes high-lumen recessed units designed for both new construction and retrofit applications. The downlights include the 600 Series (460-725 lumens), 900 Series (600-1000 lumens) and 1200 Series (1000-1600 lumens). The downlights provide excellent color rendering (80 CRI) and a selection of four color temperatures.

Booth N2165

For more info, go to HousingZone.com/PBinfo and enter # 280



SOLAR? NOT DIM AT ALL **B**

ODL's Energy Star-qualified Tubular Skylights, now with the Solar Powered Dimmer, are ideal for any room in the home where light is limited. Traditional skylights can result in "hot spots"—not so with these tubular models. They also feature the company's patented Solar Lens Dome, which gathers sunlight even during low-light hours. The two-piece kit makes installation a snap.

Booth N1015

For more info, go to HousingZone.com/PBinfo and enter # 281

LIFT ME UP **C**

If you're planning on getting into the universal design field, you'll need to brush up on residential elevators. Inclinator Company of America has a new drive system that creates a safer, more reliable emergency lowering system by eliminating the manual lowering requirement and providing an electronic failsafe design. The latest models reduce energy consumption 40-50 percent over traditional cable drum and hydraulic drive systems.

Booth C4181

For more info, go to HousingZone.com/PBinfo and enter # 282



C INCLINATOR

33

[Structural/Insulation/Housewrap]



BOISE **A**

SHOULDERING NEW JOBS **A**

Many contractors large and small have expanded into multifamily and light commercial projects, and their product needs have upsized. For these customers, Boise Cascade has introduced the BCI 90e series and AllJoist AJS-30 series deep joists with higher design values that meet or exceed any competitive offering and handle higher loads and longer spans up to 44½ feet.

Booth C3474

For more info, go to HousingZone.com/PBinfo and enter # 283



YOU'RE SURROUNDED **B**

With Fiberweb's new Surround SR Underlayment, a Tybar brand, roofing professionals now have a synthetic underlayment option that offers secondary weather protection and easy installation. Unlike traditional asphalt roofing felt, Surround SR Underlayment is tear-resistant, offers exceptional water holdout and won't wrinkle or absorb water when wet.

Booth N1426

For more info, go to HousingZone.com/PBinfo and enter # 284

C BENJAMIN OBDYKE



ALL WRAPPED UP **C**

Benjamin Obdyke's Hydrofilament Drainable Housewrap creates a path for moisture trapped behind the cladding to flow freely thanks to a 1mm gap created by the wrap's filaments. The wrap ensures that the wall behind the exterior cladding will drain faster and more efficiently, leading to a more-effective building envelope system.

Booth C824

For more info, go to HousingZone.com/PBinfo and enter # 285



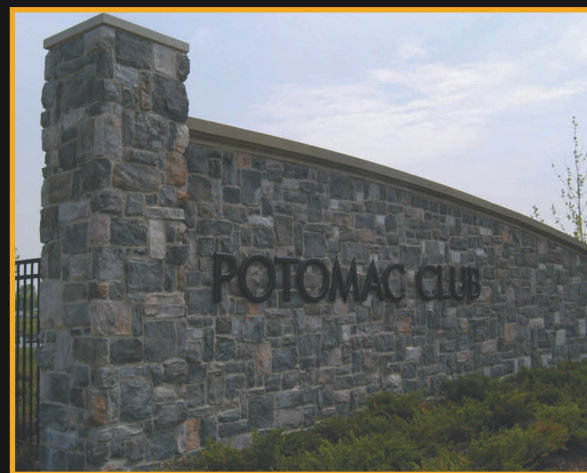
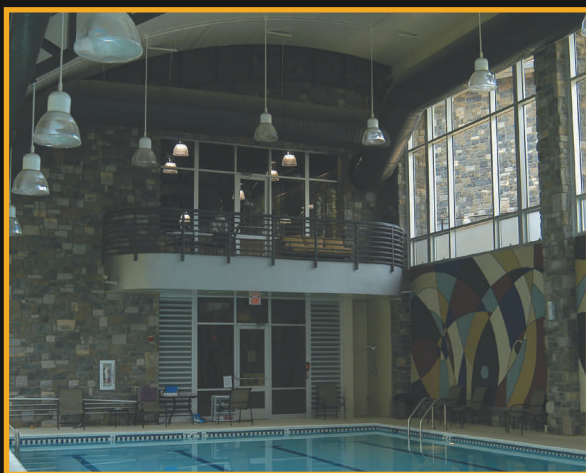
ILEVEL **D**

LEAN ON ME **D**

iLevel by Weyerhaeuser's newly-enhanced Parallam Plus structural parallel strand lumber (PSL) with wolmanized preservative protection offers builders the strength and consistency that is critical for structural framing in exterior applications. The preservative treatment penetrates to the core of the cross section to provide excellent protection.

Booth C4083

For more info, go to HousingZone.com/PBinfo and enter # 286



Quality

- Product Installation
- Product Only

Service

- Commercial
- Residential

Value

- Interior
- Exterior



1.800.795.3229

QualityStoneVeneer.com



QUALITY
STONE
VENEER
EST. 1976

For more info, go to HousingZone.com/PBinfo and enter # 23730-13

[Construction Equipment, Tools & Software]



B
MAX USA



EXAKTIME **C**



A GENERAC

PORTABLE AND POWERFUL **A**

You need backup power on your jobsites for the unforeseen. The new XG Series of portable generators from Generac is available in six different models to provide power for both residential and light commercial applications. The XG employs the Generac OHVI engine and is protected by oversized full-wrap frame tubing and impact-resistant corners.

Booth N2805

For more info, go to HousingZone.com/PBinfo and enter # 287

READY TO FIRE **B**

Max USA introduces the GS865E SuperPinner. It shoots concrete pins from 1/2 to 2 1/16 inches in length. It weighs only 9.7 pounds and includes a sequential trip trigger, reversible belt hook, safety lock out mechanism, easy jam clear door,

one-step loading and an LED low battery indicator. The magazine holds 40 pins.

Booth N1165

For more info, go to HousingZone.com/PBinfo and enter # 288

KEEPING TIME ON YOUR BLACKBERRY **C**

Exaktime's mobile timekeeping system for workers that visit multiple jobsites each day is now available for Blackberry devices. This app tracks attendance with 100-percent accuracy and sports a GPS function that lets users know when workers are at the jobsite. Users can also track hundreds of work activities and allow workers to clock in/out in Spanish or English.

Booth C639

For more info, go to HousingZone.com/PBinfo and enter # 289

If You Paid An "Environmental Fee" To NationsRent And/Or Sunbelt For Renting Equipment, A Lawsuit May Affect Your Rights

United States District Court for the Southern District of Florida
In re NationsRent Rental Fee Litigation, Case No. 06-60924-CIV-BROWN

TO: All persons who rented equipment from NationsRent between June 1, 2003 and August 30, 2006 and Sunbelt between May 28, 2004 and May 28, 2009 and paid an "Environmental Fee"

The United States District Court for the Southern District of Florida has preliminarily approved a settlement on behalf NationsRent, Inc., and Sunbelt Rentals, Inc. ("Sunbelt") (collectively, "Defendants") for customers who paid an environmental fee to Defendants. Plaintiffs have agreed to settle the Action by, among other things, granting a release of all claims that were or could have been asserted in the Action in exchange for Sunbelt's incorporation of supplemental disclosures in its rental contract. You may inspect the complete Settlement Agreement, the Complaint, and other papers filed in the Action at the office of Steven M. Larimore, United States District Court Clerk's Office, 400 North Miami Avenue, 8th floor, Miami, FL 33128, during regular business hours.

A hearing will be held on March 31, 2010 at 10:00 a.m. at the Court ("Fairness Hearing") to determine the fairness, reasonableness and adequacy of the Settlement. At the Fairness Hearing, the Court will also consider the proposed Fee and Expense Award of \$1,100,000.00 to Plaintiffs' counsel, and an incentive fee award of \$2,500.00 to plaintiff David Jacov.

The Settlement will become effective upon final judicial approval. Any Settlement Class Member, i.e. *persons who rented equipment from NationsRent between June 1, 2003 and August 30, 2006 and Sunbelt Rentals between May 28, 2004 and May 28, 2009 and paid an "Environmental Fee" (excluding Defendants and their affiliates)*, may appear in person or by attorney at the Fairness Hearing and show cause, if any, why the Settlement should not be approved; why a mandatory class of NationsRent and Sunbelt customers (as defined above) should not be certified; why a judgment dismissing the Action with prejudice against the Defendants should not be entered and Plaintiffs' claims against the Releasees should not be barred permanently; why the proposed Fee and Expense Award to Plaintiffs' counsel should not be approved; and/or why David Jacov should not receive an incentive fee award. Before the Court will consider an objection, such objection must be in writing and include reference to *In re NationsRent Rental Fee Litigation*, Case No. 06-60924-CIV-Brown, the objector's name, address, telephone number and signature; such person's objections, if any, to the matter and the basis therefore, together with any documentation that such person intends to rely upon at the Fairness Hearing and must be accompanied by formal proof that the objector paid an Environmental Fee during the class period. **Any written objection must be filed with Steven M. Larimore, United States District Court Clerk's Office, 400 North Miami Avenue, 8th floor, Miami, FL 33128 by March 15, 2010.** Any written objection also must be served upon the following and **postmarked by March 10, 2010:**

Plaintiffs' Counsel	and	Defendants' Counsel
Coughlin Stoia Geller Rudman & Robbins LLP		Kasowitz, Benson, Torres & Friedman LLP
Stuart A. Davidson		Scott B. Cosgrove
120 East Palmetto Park, Suite 500		Four Seasons Tower
Boca Raton, FL 33432		1441 Brickell Avenue, Suite 1420
		Miami, FL 33131

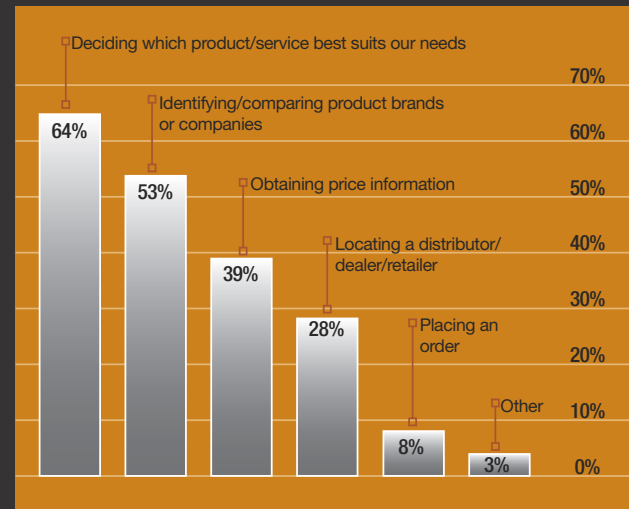
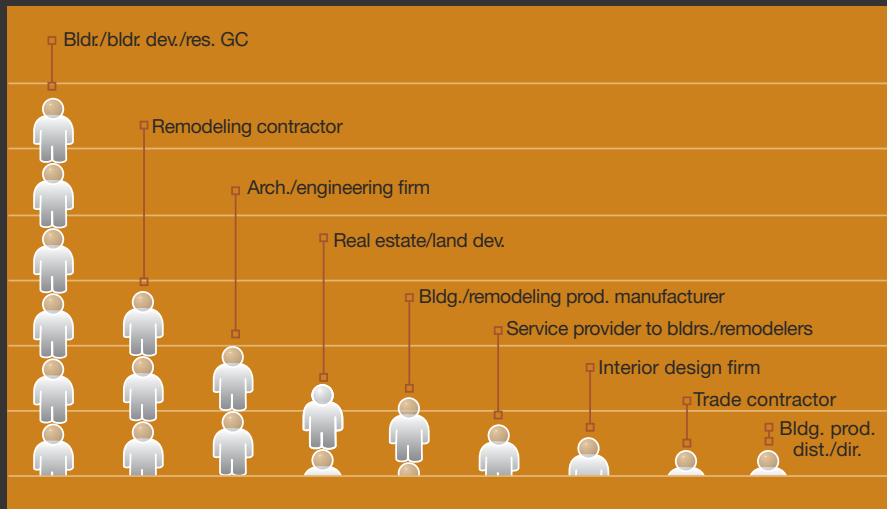
Service of papers on counsel must be by first-class mail, hand delivery, or overnight courier service. Consideration of any award of attorneys' fees and expenses to Plaintiffs' Counsel shall be separate from the Court's consideration of the fairness, reasonableness and adequacy of the settlement to class members. If you are a Settlement Class Member and do not submit a written objection in accordance with the above requirements, you will have waived any and all objections and shall forever be barred from making any objection to or otherwise challenge the Settlement, the final judgment dismissing the Action, or any other proceedings in the Action.

Please Do Not Contact The Court Concerning This Notice.

By Order of the Court Dated: October 8, 2009

**THE HONORABLE STEPHEN T. BROWN
UNITED STATES DISTRICT COURT FOR THE SOUTHERN
DISTRICT OF FLORIDA**

WHO IS VISITING?



Source: HousingZone Visitor Research Study, October 2008

WHY THEY ARE VISITING?

- ▶ Industry news/key issues
- ▶ Design ideas/concepts
- ▶ Products
- ▶ Best practices/case studies
- ▶ Economic outlook & insights
- ▶ Research
- ▶ Online Education
- ▶ Projects & industry developments
- ▶ Peer opinions & experiences
- ▶ Industry event information
- ▶ Subscription services: magazine & newsletters
- ▶ Employment opportunities
- ▶ Industry trade association links
- ▶ Award programs
- ▶ Advertising information

FEATURED THIS MONTH:

- ▶ Stimulus
- ▶ Green
- ▶ High Performance Homes

GERBER **B**

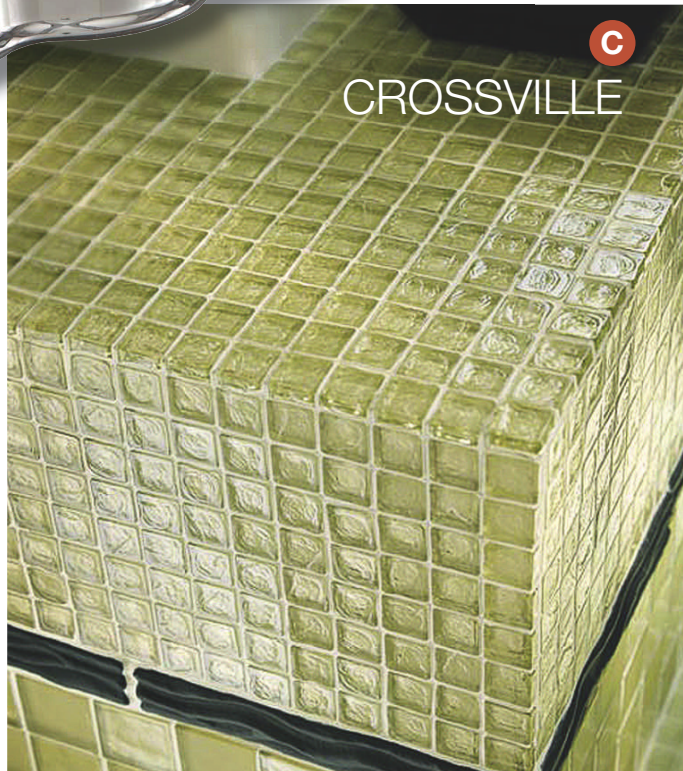


D GREEN CHOICE



C

CROSSVILLE



F DELTA



A

RHEEM



E GEORGIA-PACIFIC

GRABBING PRESTIGE **A**

The Rheem Prestige Series Geothermal Heat Pump with Comfort Control System serial communicating feature is offered in package and split system configurations. Residential products are available in 2-, 3-, 4-, 5- and 6-ton capacities; split systems are available in 2-, 3-, 4- and 5-ton capacities. The pumps feature durable, two-stage compressors and an advanced variable-speed air delivery system.

For more info, go to HousingZone.com/PBinfo and enter # 290

STYLISH AND (WATER) SENSIBLE **B**

Low-flow faucets are all the rage and Gerber has several stylish, 1.5-gallon-per-minute models certified by the EPA's

WaterSense program. Shown here is the Riverdale line. Made in chrome and brushed nickel, the faucets are equipped with lead-free waterways and reliable ceramic disc cartridges.

For more info, go to HousingZone.com/PBinfo and enter # 291

DID YOU HEAR AN ECHO? **C**

Crossville's Echo Recycled Glass includes 15 brilliant colors with a recycled content up to 100 percent. Shown here are the EG020 "For Keeps" 1-by-1-inch Clear, 2-by-2-inch Clear and EG110 Onyx Surf Listello Frosted tiles. The company introduced the line at the annual Greenbuild show last month.

For more info, go to HousingZone.com/PBinfo and enter # 292

BURLY FLOORS **D**

Green Choice Flooring has a new, burly flooring choice in Burlwood. The boards have a braided pattern with random knot-like twists in the grain. Part of the company's StrandWoven line, the floors are very hard and stable enough to use in both commercial and residential applications. They are also suitable for installation directly over a concrete sub-floor, given that it meets moisture level requirements.

For more info, go to HousingZone.com/PBinfo and enter # 293

PANELS PASS THE TEST **E**

Two Dens brand interior gypsum panel products from Georgia-Pacific have passed the industry's most-stringent mold-resistance test—the 12-week ASTM D 6329 protocol. DensArmor Plus High-Performance Interior Panel and DensShield Tile Backer each passed the test

with zero mold growth. The test, which is three times longer and more rigorous than the current industry standard (ASTM D 3273), was conducted by an independent third party.

For more info, go to HousingZone.com/PBinfo and enter # 294

PROXIMITY ALERT **F**

Don't those airport infrared faucets tick you off? Delta has a solution for homeowners and institutional customers who want a hands-free faucet that actually works. The optic- and infrared-free Proximity line forms a 4-inch field around the body of the faucet to detect hands and trip the faucet on—and it works every time. The Grail faucet (shown here) uses 1.5 gallons per minute and can contribute to LEED credits on projects.

For more info, go to HousingZone.com/PBinfo and enter # 295



LSB
LiteSteelbeam

CUT IT. DRILL IT. FASTEN IT.
WORK IT.



NO SPECIAL TOOLS REQUIRED.

Work LiteSteel™ beam on-site with the same tools you already use and get quicker, easier installations, lower installed costs and less headaches. The unique LSB® design is on average 40% lighter than hot rolled steel, or engineered wood, with equivalent load-carrying capacity. LSB delivers the advanced structural performance and strength you need to span the distance and carry the load.

Spec LITE for your site.

Visit LiteSteelbeam.com
for more technical information and
to download your **FREE LSB Selector**
Software and **FREE LSB Installers Guide**



IBS 2010
Come See Us At
BOOTH #C4879

LSB
LiteSteelbeam

LiteSteel Technologies America, LLC is a OneSteel Group Company

LiteSteel™ beam is a trademark and LSB® is a registered trademark, and are used under license by LiteSteel Technologies America, LLC. US Patent Numbers 5163225, 5373679, 5401053, 10-561185, 11-570937, 11-570942. ©2009 LiteSteel Technologies America, LLC

For more info, go to HousingZone.com/PBinfo and enter # 23730-16



BRINGING LED TO LIGHT **G**

Sea Gull Lighting's Warwick mini pendant combines the energy efficiency of light emitting diode (LED) fixtures with a stylish, vintage aesthetic. The fixture delivers the same footcandle output as a 75-watt A-type incandescent bulb using only 10 watts of power. Designed to last 35,000 hours, which is 20 years under normal use of four hours per day, the LEDs are dimmable down to 10 percent of full light output on low-voltage dimmers.

For more info, go to HousingZone.com/PBinfo and enter # 296

SEAL AND SAVE **H**

Increase the energy efficiency of new and existing HVAC systems with Foil-

Grip 1403-181BFX rolled duct sealant from Hardcast. With zero dry time, no VOCs and instant adhesion, the sealant is a fast and environmentally friendly solution for sealing all types of ductwork material, including sheet metal, duct board, flex duct, PVC-coated duct and duct-wrap vapor barriers. Composed of modified butyl adhesive joined to a mill-finished aluminum foil backing, Foil-Grip will not crack, dry or rot.

For more info, go to HousingZone.com/PBinfo and enter # 297

FEELING FLUSHED **I**

You get all the power of a traditional toilet in the 1.1-gallon-per-flush Yorkville Toilet line from American Standard. Equipped

with pressure-assisted siphon jet flush action and a fully-glazed, 2½-inch trapway, Yorkville toilets deliver high performance and fewer clogs. The company says the two-piece toilets are capable of removing as much as a kilo of bulk waste from the bowl with each flush.

For more info, go to HousingZone.com/PBinfo and enter # 298

COOLING OFF **J**

According to a Darmstadt, Germany-based study conducted by the Passive House Institute, BASF's Neopor expandable polystyrene insulation solution can help reduce heating and cooling energy consumption by as much as 70 percent. Neopor, shown here installed over a multifamily unit, contains infrared absorbers to help

keep roofs cool.

For more info, go to HousingZone.com/PBinfo and enter # 299

GREEN GLASS **K**

Bendheim's EcoGlass is a new line of textured architectural glass containing 60 percent recycled material and is produced in Europe's only clean-burning oxygen/fuel-fired cast glass furnace. The product is ideal for a range of residential applications, including sliding doors and shower enclosures. EcoGlass is available in 10 textures, offering varying degrees of privacy, and with custom color interlayers or color coatings for decorative walls and backsplashes.

For more info, go to HousingZone.com/PBinfo and enter # 300



ECOBEE **M**



TAKAGI



MER-KRETE **L**

FRANKLIN INTL. **N**



WATERPROOFING GOES GREEN **L**

Hydro Guard SP-1 from Mer-Krete Systems is a rapid-drying, load-bearing waterproofing and crack isolation membrane that provides 100 percent waterproof coverage and limits the transfer of substrate cracks to the finished ceramic or stone tile surface. The product is light green when applied and darkens to an emerald green when dry, ensuring complete coverage.

For more info, go to HousingZone.com/PBinfo and enter # 301

CHANGE TEMPS WITH YOUR IPHONE **M**

Ecobee has developed a free iPhone/iPod application for its Smart Thermostat, allowing homeowners to remotely adjust their thermostat settings using a touch-screen iPhone or iPod device. Users can adjust the temperature, schedule or update a vacation event, change the HVAC system's operating settings and receive alerts.

For more info, go to HousingZone.com/PBinfo and enter # 302

FORM A BOND **N**

Titebond Greenchoice panel adhesive from Franklin Intl. builds strength in one-sixth the time of urethane or solvent-based panel adhesives, enabling

contractors to install virtually any type of paneling on either porous or nonporous substrates without the use of fasteners. Ideal for use with FRP, PVC, tub surrounds, wood, foam, laminate, treated plywood, metal and foam board, the VOC-free adhesive is especially effective in remodeling jobs where panels can be installed over existing panels, tile or sealed concrete.

For more info, go to HousingZone.com/PBinfo and enter # 303

GO TANKLESS **O**

Takagi's T-H2 tankless water heater features a front panel LED screen that displays temperature settings and codes for easy maintenance and troubleshooting. Installers will not have to use dipswitches because they can see what temperature is actually being inputted. The system can accommodate venting with PVC pipe versus stainless steel,



HEAT TRANSFER PRODUCTS **P**

allowing for cheaper, faster installation.

For more info, go to HousingZone.com/PBinfo and enter # 304

TWO FOR ONE **P**

The Phoenix Evolution from Heat Transfer Products combines hydronic space heating and domestic hot water delivery in a single, compact package. The pre-plumbed system cuts space and installation time and improves thermal efficiency versus traditional gas-fired water heater, boiler and buffer tank setups. The system consists of three components: a hot-water storage tank, an energy-saving modulating burner assembly attached to the outside bottom of the tank and a space-heating module attached to the top of the tank.

For more info, go to HousingZone.com/PBinfo and enter # 305



MAKE YOUR NEXT PROJECT MONUMENTAL. *Belgard's Mega-Arbel pavers feature shapes, colors, and patterns evoking the unique character of natural flagstone. It's a gently rustic, yet quietly sophisticated appearance that's certain to leave a lasting impression for generations to come — and maybe longer.*

For your complimentary 60+ page Idea Guide, call 877-BELGARD (235-4273) or visit Belgard.biz



BE PREPARED FOR COMPANY™

For more info, go to HousingZone.com/PBinfo and enter # 23730-17



R BENJAMIN MOORE

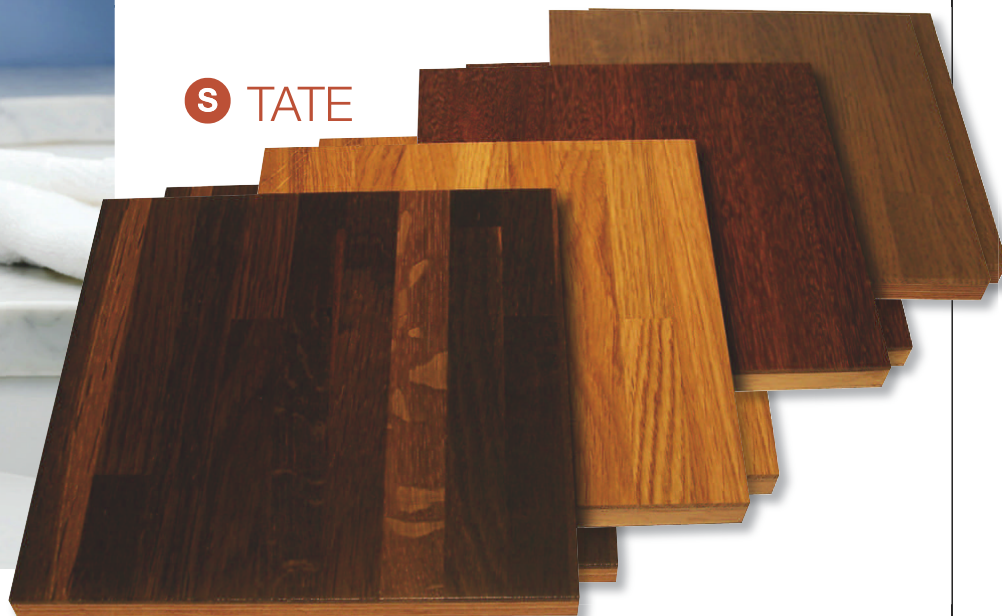


T HANSON HARDSCAPES



Q MOEN

S TATE



FAUCET HAS WATER SENSE **Q**

Designed for traditional décor applications, Moen's Rothbury single-handle faucet offers a relaxed blend of vintage design and classic masculine styling in a water-efficient design. The WaterSense-certified faucet features a 1.5-gallon-per-minute aerator, which cuts water use by a third compared with traditional 2.2-gpm aerators.

For more info, go to HousingZone.com/PBinfo and enter # 306

REFORMULATED VOC-FREE PAINT **R**

Fifteen years after Benjamin Moore introduced its first zero-VOC paint, EcoSpec, the company launched a reformulation of the product line and made it available in all of the company's 3,300-plus colors. EcoSpec WB is 100 percent VOC-free, has virtually no odor during application, and dries rapidly, allowing for spaces to be used within two hours of being painted.

For more info, go to HousingZone.com/PBinfo and enter # 307

WALK ALL OVER YOU **S**

Tate's VOC-free engineered hardwood tiles are a 3mm natural wood laminate bonded to an 11mm Versacore wood veneer backer. Available in four standard patterns, the new laminate can be made from a variety of species of hardwoods in optional strip sizes. The surface of the tile is sanded smooth and finished with a UV-cured ecological oil that penetrates deep into the wood.

For more info, go to HousingZone.com/PBinfo and enter # 308

SELF-CLEANING BRICK PAVERS **T**

Hanson Hardscapes' entire line of cement brick pavers is now available with TX Active self-cleaning, pollutant-reducing cement mix. TX Active is used as a catalyst to naturally break down organic and inorganic pollutants, including carbon monoxide, nitrogen oxides, sulfur oxides and volatile organic compounds, such as benzene and toluene. It also helps maintain the product's aesthetic appeal by preventing the buildup of soot, grime, mold, mildew, algae and bacteria, which can discolor pavements over time.

For more info, go to HousingZone.com/PBinfo and enter # 309

freewatt®

IT STARTS WITH ONE.



By installing one small freewatt unit, you're making a big change in the neighborhood. The freewatt micro CHP system offers your customers a high efficiency heating unit and a power source in one compact design. So they can reduce their carbon footprint and lower utility costs at the same time. Not to mention, a freewatt system can greatly increase a home's value. Just wait until the neighbors find out.



©2009 ECR International, 2201 Dwyer Avenue, Utica, NY 13501, 315-797-1310
freewatt® is an innovation of Climate Energy, LLC, a JV of ECR International and Yankee Scientific ECR-0101

YOU CAN
FREEWATT
freewatt.com

For more info, go to HousingZone.com/PBinfo and enter # 23730-18

SV10

Professional Builder®

SHOW VILLAGE 2010



They're Smart.

They're Green.

They're What Home Buyers Want.

January 19-22, 2010, Las Vegas
International Builders' Show®

Tuesday – Thursday: 8:30 a.m. to 6 p.m.

Friday: 8:30 a.m. to 1 p.m.

Market by market, the housing industry is turning around, and builders will need to offer homes that are sophisticated and sustainable. Show Village 2010's homes will incorporate the latest construction techniques, design and technology to meet the wants and needs of today's demanding buyer.

The size of floor plans is decreasing while the need for energy-efficiency grows. This year's Show Village homes are designed to answer market demand.

Look for Show Village 2010 as you enter the International Builders' Show January 19-22. See you there!

See the latest building products installed and in action from these premier sponsors:

Andersen Windows and Doors:

Windows & Patio Doors

BASF: Insulation

BEHR: Interior and Exterior Paint

Bosch Home Appliances: Appliances

Custom-Bilt: Metal Roof

Dow Building Solutions: Structural
Insulated Sheathing

**Electrolux Central Vacuum
Systems:** Central Vac

Environment One: Sewer

Gaggenau: Appliances

GE Sealants: Caulk

Generac: Generator

Genova Products: Decking & Rails

Heatilator: Indoor Fireplace

Honeywell: Insulation

Icynene: Insulation

Interceramic Tile & Stone:
Tile & Stone

Kichler Lighting: Lighting

Knauf: Insulation

Kwikset: Locks

Lasco Bathware: Bathtubs

Leeper Stair Products: Stairs

LifeTime Lumber: Decking & Rails

Maze Nails: Nails

Merillat: Cabinetry

Moen® Incorporated:

Kitchen Faucets, Lavatory Faucets
and Showering

Nisus Corporation:

Bora-Care with Mold-Care

Rinnai: Outdoor Fireplace and
Tankless Water Heater

Schlage: Schlage LINK™ Solution

ShowHouse®: Kitchen Faucets,
Lavatory Faucets and Showering

Simpad Inc.: Plan and Estimating
Services

Simpson Door: Exterior Doors

The Tapco Group:
Siding, Roofing and Shutters

Thermador Home Appliances
Appliances

ThyssenKrupp Access: Elevator

Trane: HVAC

Viance: Ecolife™ Stabilized Weather-
Resistant Wood

All homes built by:



For more information visit: www.pbshowvillage.com

**Tickets
Now
Available!**

The NationalsSM 2010

Honoring the Innovation, Creativity, and Endurance
of the Best in New Home Sales & Marketing

Join us for The NationalsSM 2010 in Las Vegas, Nevada as we recognize the best and most committed new home sales and marketing professionals in the nation.

The NationalsSM proudly recognizes **Bert Selva** of Shea Homes and **Bob Schultz** of New Homes Sales Specialists as Legends of Residential Marketing for 2010!

Make plans now for Tuesday, January 19th at The NationalsSM Caesars Palace, Las Vegas.

National Gala
Tuesday, January 19, 2010, Las Vegas, NV

Reserve your tickets today
at www.TheNationals.com



Exclusive Co-Sponsors:

MetLife Home Loans



**Elite
Sponsors:**



**Preferred
Sponsor:**



Visit www.thenationals.com today for more information.

For more info, go to HousingZone.com/PBinfo and enter # 23730-19

FLEXIBLE MOULDINGS BY OUTWATER



Outwater's ORAC DECOR® Flexible Polymer Mouldings enable you to easily create "on demand" radii right on the job site to suit almost any inside, outside or arch radius application without profile deformation or causing excess stress to the mounting surface. ORAC DECOR® Flexible Mouldings can be installed using typical woodworking equipment and do not require priming before finishing.

FREE 1,000+ PAGE MASTER CATALOG!
LOWEST PRICES...WIDEST SELECTION... ALL FROM STOCK!

ARCHITECTURAL PRODUCTS BY OUTWATER



Call **1-888-772-1400** (Catalog Requests)
1-800-835-4400 (Sales)
Fax **1-800-835-4403**
www.outwater.com
New Jersey • Arizona • Canada



For more info, go to HousingZone.com/PBinfo and enter # 23730-125

DECORATIVE WOOD CARVINGS BY OUTWATER



FREE 1,000+ PAGE MASTER CATALOG!
LOWEST PRICES...WIDEST SELECTION... ALL FROM STOCK!

ARCHITECTURAL PRODUCTS BY OUTWATER



Call **1-888-772-1400** (Catalog Requests)
1-800-835-4400 (Sales)
Fax **1-800-835-4403**
www.outwater.com
New Jersey • Arizona • Canada



For more info, go to HousingZone.com/PBinfo and enter # 23730-126

STONE & METAL TILES BY OUTWATER



Now you can finally buy direct from a stocking source and save! Offered as a time and cost saving alternative to labor-intensive piecemeal fabrication, Outwater's 100% Genuine Stone Tiles and 304 Grade Stainless Steel Metal Tiles are hand sorted and individually adhered onto mesh style backings to create seamless interlocking tiles that are easy to install using traditional methods, materials and tools.

FREE 1,000+ PAGE MASTER CATALOG!
LOWEST PRICES...WIDEST SELECTION... ALL FROM STOCK!

ARCHITECTURAL PRODUCTS BY OUTWATER



Call **1-888-772-1400** (Catalog Requests)
1-800-835-4400 (Sales)
Fax **1-800-835-4403**
www.outwater.com
New Jersey • Arizona • Canada



For more info, go to HousingZone.com/PBinfo and enter # 23730-127

*Our Surface Protection
& Dust Control Solutions*

**SAVE YOU
TIME & MONEY**

- Give Us A Call
We Offer the
Best Values in
the Industry.
- Lowest Prices
& Satisfaction
GUARANTEED.



SCRATCH PROTECTION

- PROTECT TUBS, SINKS,
SHOWERS & WHIRLPOOLS
- WATER-BASED COATING
CURES TO A DURABLE
"PROTECTIVE SKIN"
- EASY-TO-APPLY, EASY-TO-REMOVE

CALL 1.800.789.6633
OR ORDER NOW AT

www.protectiveproducts.com

For more info, go to HousingZone.com/PBinfo and enter # 23730-128

Quick Low Cost



FALL PROTECTION *throughout construction including drywall*

Build a freestanding OSHA compliant guardrail in minutes using construction grade 2X4s and Safety Boots.




1-800-804-4741 • www.safetyboot.com

Independently certified to exceed OSHA temporary guardrail regulations, Safety Boots anchor to most surfaces including concrete and are fully reusable.

Freestanding design allows guardrails to remain in place throughout construction, including drywall installation.

For more info, go to HousingZone.com/PBinfo and enter # 23730-129

Plastpro Manufactures 1st & Only Fire-Rated & Water Proof Composite Entry System



Plastpro, Inc., a leading supplier of fiberglass doors and composite home products in the United States, announced that it is currently manufacturing a Fire-Rated Composite Entry System Series – Fire Rated Fiberglass Door and Fire Rated PF Frame. Containing a fire retardant foam core, the doors and door frames have a Warnock-Hersey fire rating that guarantees their ability to withstand high-temperature fires for a minimum of 20 minutes. We are the 1st and only fiberglass door manufacture that provides not only fire rated but water proof entry system.


www.plastproinc.com
Ph: 1-800-779-0561

For more info, go to HousingZone.com/PBinfo and enter # 23730-130

1.800.872.1608

WORTHINGTON

Your Only Source For Fine Architectural Details



Architectural Balustrades
Call for a FREE Catalog

www.WorthingtonMillwork.com
Jacksonville, FL

For more info, go to HousingZone.com/PBinfo and enter # 23730-131

47

Soap Dishes

Shampoo Shelves

Toiletry Shelves

Shaving Steps



DÜK LINER™

The Custom Niche In 20 Minutes

888.821.2545

Dukliner.com

For more info, go to HousingZone.com/PBinfo and enter # 23730-132



Finlandia Saunas
are a Cut Above The Rest...

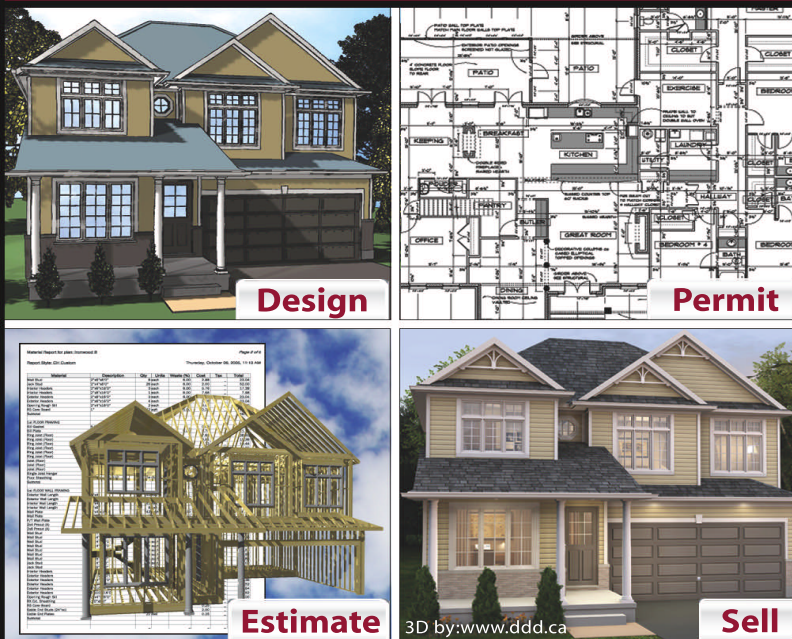
...with the highest quality materials and old country craftsmanship. In fact, we still use 1" x 4" wall and ceiling boards, while our competitors use only 1/2" x 4". That's why more architects and builders come back to **Finlandia Sauna** again...and again...for easy and trouble free installation of any standard or custom size, as well as best finished product.

Contact us at
800-354-3342
www.finlandiasauna.com
Nationally recognized since 1964!

For more info, go to HousingZone.com/PBinfo and enter # 23730-133

SoftPlan Raises the Bar

"much faster and more accurate than the competition"
-Remodeling Magazine



for a free trial version
1-800-248-0164
www.softplan.com

Version 14
SOFTPLAN
ARCHITECTURAL DESIGN SOFTWARE

For more info, go to HousingZone.com/PBinfo and enter # 23730-134

Cabinet & Millwork Shops • Contractors • Remodelers
Design/Build Firms • Project Managers

Commercial & Residential Casework

*The quality you demand.
The service you deserve.*

- Easily assembled, frameless cabinet boxes
- Storage & Closet Systems
- Custom-sized casework
- Drawer boxes
- Adjustable shelves
- Full overlay slab-style fronts
- Superb customer service
- Increased profitability
- Higher productivity
- Better cost control
- Consistent quality

For more information or to
download a FREE digital catalog,
please visit our website.

CabParts, Inc.
Your Case Work Made EasySM

www.cabparts.com
970-241-7682



**Confirmat
Joinery**

**Dowel
Joinery**



For more info, go to HousingZone.com/PBinfo and enter # 23730-135

- ★ **Reduce Call-Backs!**
- ★ **Simple, Effective, Adjustable!**
- ★ **Time Tested for over 25 Years!**
- ★ **All types of Doors & Windows!**
- ★ **Over 2,000,000 Sold!**



Jamsill Guard
The ORIGINAL Sill Pan Flashing Since 1983!



**2010 International Builders' Show
Visit Us In Booth N1809!**

1-800-JAMSILL (526-7455)

jamsill.com

For more info, go to HousingZone.com/PBinfo and enter # 23730-136

NEW from the manufacturers of BETTER-BENCHTM

RECESS-ITTM



Products shown are produced of a corrosion resistant alloyed aluminum with an elastomeric-waterproofing and anti-fracture coating combined with an aggregate bonding base. Finished materials, ceramic tile, marble, granite, etc. can be applied immediately after product installation utilizing **standard** mastics or thin-set. No additional additives are required. Listed products are supplied with (4) multi-purpose wall fasteners which may be used with/without preinstalled wood blocking.

The Shower Bench Solution

An easy to install bench-forming system that replaces the complex methods currently in use.

This fully independent supporting unit can be mounted to most vertical surfaces quickly and efficiently, saving the installer valuable time. What once took two days to complete can now be done in about an hour! BETTER-BENCHTM provides design flexibility and is ideal for new or retrofit applications. *Patented*

BETTER-BENCHTM



For more information
or a distributor near you, call
1-800-382-9653
INNOVIS CORPORATION
www.innoviscorp.com

For more info, go to HousingZone.com/PBinfo and enter # 23730-137

New Solutions. New Styles.



Lighting that defines your **style**™



KICHLER
LIGHTING

www.kichler.com

For more info, go to HousingZone.com/PBinfo and enter # 23730-138

Your ONE-STOP Source for Custom Stair Products

*NO ONE in the industry comes close to
filling and shipping orders in the same day!*

Balusters • Newels
Handrails • Fittings • Treads
Mouldings • Sheet Goods

For over 50 years, Leeper's has supplied
the leading tract stair builders with
high quality product and next day delivery.

State-of-the-art 5-Axis CNC equipment,
software and engineering allow us to
deliver the same quality stair parts in
CUSTOM species and OVERSIZED profiles.

Visit us on the Web, or call 1-800-775-1173.

Customer Care Representatives are available to take your order 6 AM to 6 PM PST!

LEEPER'S STAIR PRODUCTS

2100 E. Artesia Blvd. | Long Beach, California 90805
Phone: (562) 422-6525 | Fax: (562) 422-9924 | e-mail: info@leepers.com

www.leepers.com



**Professional
Builder**
SVM10 SPONSOR
SHOW VILLAGE 2010

Come see us in the
Show Village Home!

For more info, go to HousingZone.com/PBinfo and enter # 23730-139

HousingZone.com Every day there is a reason to visit.












Stimulus Package?

**Professional
Builder**


Professional Remodeler login
and learn.com

Custom Builder VisibleCity

housing
giants



Melton ClassicsTM
Incorporated
www.MeltonClassics.com



COLUMNS, BALUSTRADES & MOULDINGS

- Fiberglass Columns
- Poly/Marble Columns
- Synthetic Stone Balustrades & Columns
- Wood Columns
- Cast Stone Balustrades & Details
- Polyurethane Balustrades, Mouldings & Details
- GFRG Columns & Cornices
- GRG Columns & Details

Custom Quotations:
800-963-3060

For more info, go to HousingZone.com/PBinfo and enter # 23730-200




1.800.872.1608
WORTHINGTON
Your Only Source For Fine Architectural Details




Architectural Balustrades
Call for a FREE Catalog
www.WorthingtonMillwork.com
Jacksonville, FL

For more info, go to HousingZone.com/PBinfo and enter # 23730-201

Pent Arbors.



Cedar Pent Arbors for above windows and garages.



VixenHill.com
800-423-2766

For more info, go to HousingZone.com/PBinfo and enter # 23730-202

MAINTENANCE-FREE

CUPOLAS & LOUVERS



NEW CONCEPT LOUVERS Telephone: 1-800-635-6448
www.NewConceptLouvers.com

For more info, go to HousingZone.com/PBinfo and enter # 23730-203

Factory Direct Wood Flooring

Same Day Shipping
Over 1M sf in Stock

Toll Free **1-888-552-9663**
Country Wood Flooring

For more info, go to HousingZone.com/PBinfo and enter # 23730-204

HousingZone.com
Every day there is a reason to visit.

What is Green?

HousingZone.com

Every day there is a reason to visit.

Stimulus Package?



Professional Builder Professional Remodeler Custom Builder housing giants
login and learn.com VisibleCity

877-279-9993

ARCHITECTURAL MALL™

"The Finest in All Architectural Millwork, Columns, and Balustrades"

COLUMNS

- POLYURETHANE
- FIBERGLASS
- POLYMER STONE
- WOOD

BALUSTRADES

- POLYURETHANE
- FIBERGLASS
- POLYMER STONE

HDP MOLDINGS

HDP NICHES

www.columnsandbalustrades.com

For more info, go to HousingZone.com/PBinfo and enter # 23730-205

Building Curved Walls?

MUCH WASTE

Are you still cutting up sheets of plywood/OSB? Lots of material, lots of time.

NO WASTE

Assemble what you need. NO WASTE, incredibly fast!

Quick Curve Plate is the new standard for curved walls. Fast, accurate and NO WASTE.

ORDER DIRECT
FOR A LIMITED TIME AT:
866.443.FLEX(3539)

Untreated

Treated

Quick Curve PLATE

FLEX-ABILITY CONCEPTS

Tel 866.443.3539 Fax 405.996.5353
www.flexabilityconcepts.com

For more info, go to HousingZone.com/PBinfo and enter # 23730-206



Fill, bond, and laminate
 AZEK® Trimboards!

TrimBonder™
 Bonding System

- ▼ Fills nail holes, joints, and gaps quickly and permanently
- ▼ Bonds/laminates AZEK® Trimboards, metal, wood, and CPVC
- ▼ Easy to use, fits standard caulking gun

Devcon®
 Construction Products Group
 1-800-933-8266

AZEK is a registered trademark of Vycom Corporation.
 Devcon and TrimBonder are registered trademarks of Illinois Tool Works.
 © 2006 ITW Devcon. All rights reserved.

For the location of
 your nearest dealer visit:
www.trimbonder.com

For more info, go to HousingZone.com/PBinfo and enter # 23730-207

Every day there is a reason to visit.

Stimulus Package?

Professional Builder
Professional Remodeler
Custom Builder
VisibleCity
housing giants

login and learn.com



For more info, go to HousingZone.com/PBinfo and enter # 23730-208

In-O-Vate
Technologies Inc

Save Space • Save Energy • Reduce Fire Hazard

Finish the Laundry Right

the dryerbox®

Safely Collect Flex Exhaust Hose
Neatly in the Wall Behind the Dryer

888-443-7937 www.Dryerbox.com

For more info, go to HousingZone.com/PBinfo and enter # 23730-209

A beautiful add-on to your projects and your profits.

ProClosets offers more than just closets. Think of it as your own custom closet business. We make it possible to offer your clients a complete line of custom storage options straight from your laptop. **Contact us today to see how we can add beauty and profitability to your existing jobs.**

ProClosets
The Professional's Choice for Closets

877-BUY-A-PRO | PROCLOSETS.COM

For more info, go to HousingZone.com/PBinfo and enter # 23730-210

HousingZone.com

Every day there is a reason to visit.

What is Green?

Professional
Builder

Professional Remodeler:
login
and learn.com

Custom Builder:
VisibleCity

housing
giants

Professional Builders deserve
Professional Solutions



Powered by Autodesk® Technology

An ITW Company
AMERL-CAD

- Construction Documents
- 3D Models
- Framing
- Bill of Materials
- Graphics
- Manufacturing Links



- Powered by Autodesk Technology
- Efficient Workflow and Processes
- Accurate Intelligent Models

WWW.VISIONREZ.COM

For more info, go to HousingZone.com/PBinfo and enter # 23730-211

Company	Page #	Circle #	Phone	For more information
Bank of America	55		800/344-9403	www.bankofamerica.com
Behr Process Corporation	24	8		www.behr.com
Delta Faucet Company	13	3	800/345-DELTA	www.deltafaucet.com
Dow Chemical Company	26	9	888/668-3801	www.dow.com
ECR International	43	18		www.ecrinternational.com
*Excel Homes LLC	31	11	800/521-8599	www.excelhomes.com
Ferguson	4	1		www.ferguson.com
Ford Motor Company	28, 29	10	800/258-FORD	www.ford.com
GMC Commercial Vehicles	6, 7		800/GMC-8782	www.gmc.com
Georgia-Pacific Wood Products	10A-B, 18A-B, 22A-B		800/BUILD G-P	www.gp.com
JELD-WEN	Back Cover	20	800/535-3462	www.jeld-wen.com
Litesteel Technologies America, LLC	38	16	877/285-2607	www.litesteelbeam.com
Merillat Industries Inc.	2, 3		517/263-0771	www.merillat.com
NAHB	45	19	800/368-5242	www.nahb.org
NationsRent Settlement	35	14	(305) 377-1666	http://nationsrentsettlement.com
BELGARD	41	17	877/BELGARD	www.belgard.biz
*Owens Corning	38	15	800/GET-PINK	www.owenscorning.com
Pella Corp.	17	5	888/84-PELLA	http://web.pella.com
Ply Gem Windows	8	2	800/800-2244	www.plygemwindows.com
Quality Stone Veneer	34	13	800/795-3229	www.qualitystoneveneer.com
Simpson Strong-Tie Co. Inc.	15	4	800/999-5099	www.strongtie.com
Sprint Spectrum	21	6	800/SPRINT-1	www.sprint.com
The Tapco Group	32	12		www.tapcoint.com
Viega	23	7	1-877-VIEGA-NA	www.viega.net
*Regional				

advertising sales

General Manager, Reed Construction Media

Dean Horowitz, 630/288-8180
dhorowitz@reedbusiness.com

Group Director – Sales/Business Development

Tony Mancini, 610/688-5553
armancini@reedbusiness.com

Director – E-media Solutions

Shannon Darmody, 630/288-7963
shannon.darmody@reedbusiness.com

WESTERN REGION

Director – Residential Titles

Director – Western Region

Jeff Elliott, 616/846-4633
jelliott@reedbusiness.com

Key Accounts – Integrated Sales

Brian Grohe, 630/288-8159
brian.grohe@reedbusiness.com
States: AZ, CO, ID, MT, NM, NV, TX, UT, WY

Mike Ostrowski, 630/288-8139
michael.ostrowski@reedbusiness.com
States: AK, CA, HI, OR, WA, Western Canada

Product Specialist – Integrated Sales

Brian Grohe, 630/288-8159
brian.grohe@reedbusiness.com

EASTERN REGION

Director – Eastern Region

Dan Colunio, 781/734-8360
dcolunio@reedbusiness.com

Key Accounts – Integrated Sales

Adam Grubb, 317/913-1608
adam.grubb@reedbusiness.com
States: CT, MA, ME, NH, NJ, NY, PA, RI, VT, Eastern Canada

John Huff, 630/288-8189
john.huff@reedbusiness.com
States: AL, DC, DE, FL, GA, MD, MS, NC, SC, VA

Product Specialist – Integrated Sales

Jan Varnes, 630/288-8143
jan.varnes@reedbusiness.com

MIDWEST REGION

Director – Midwest Region

Rick Blesi, 630/288-8140
rblesi@reedbusiness.com

Key Accounts – Integrated Sales

Mary Adee, 630/288-8134
madee@reedbusiness.com
States: AR, IA, IN, KS, LA, MO, ND, NE, OK, SD, WI

Tim Gillerlain, 630/288-8168
tim.gillerlain@reedbusiness.com
States: IL, KY, MN, OH, TN, WV

Product Specialist – Integrated Sales

Rob Bertrand, 630/288-8615
rob.bertrand@reedbusiness.com

Director of E-Media

Mary Nasiri, 630/288-8576
mnasiri@reedbusiness.com

Custom Project Manager

Emily Yarina, 630/288-8109
emily.yarina@reedbusiness.com

Director of Events

Judy Brociek, 630/288-8184
jbrociek@reedbusiness.com

Marketing & Client Services Coordinator

Dawn Batchelder, 630/288-8141
dawn.batchelder@reedbusiness.com

Custom Reprints and Electronic Usage

The YGS Group: Jeanine Pranses, 717/505-9701 x136
jeanine.pranses@theygsgroup.com

Advertising Production Manager

Mike Rotz, 630/288-8427
michael.rotz@reedbusiness.com

Advertising Contracts

Melinda Werner, 630/288-8065
melinda.werner@reedbusiness.com

Graphic Production Manager

Shirley Surles, 630/288-8442
ssurles@reedbusiness.com

Main Office

Professional Builder
2000 Clearwater Drive, Oak Brook, IL 60523
Phone: 630/288-8141, Fax: 630/288-8145
Best in American Living Award: To enter this design contest, contact address above. Annual Report of Housing's GIANTS®: To request a survey form, contact GIANTS400@reedbusiness.com. For subscription inquiries and change of address: Customer Service, Reed Business Information, 8878 S. Barrons Blvd., Highlands Ranch, CO 80126-2345; phone: 800/446-6551; fax: 303/470-4280; e-mail: subsmal@reedbusiness.com.

Professional Builder®

VOL. 74 NO. 12

staff

Editor-in-Chief

David Barista 630/288-8082
dbarista@reedbusiness.com

Creative Director

Bill Patton 630/288-8050
bpatton@reedbusiness.com

Senior Editors

Susan Bady 630/288-8194
susan.bady@reedbusiness.com

Mark Jarasek 630/288-8171

mark.jarasek@reedbusiness.com

Products Editor

Nicholas Bajzek 630/288-8187
nicholas.bajzek@reedbusiness.com

BUSINESS STAFF

General Manager, Construction Media

Dean Horowitz 630/288-8180
dhorowitz@reedbusiness.com

Group Director – Sales & Business Development

Tony Mancini 610/205-1180
amancini@reedbusiness.com

Director of Events

Judy Brociek 630/288-8184
jbrociek@reedbusiness.com

Custom Project Manager

Emily Yarina 630/288-8109
emily.yarina@reedbusiness.com

Director of Finance

Bruce Kslazek 630/288-8120
bksiazek@reedbusiness.com

Audience Marketing Manager

Angela Tanner 800/446-6551
subsmal@reedbusiness.com

MAIN OFFICE

Professional Builder

2000 Clearwater Drive
Oak Brook, IL 60523
Telephone: 630/288-8000
Fax: 630/288-8145

Reed Business Information


John Poulin, CEO/CFO, RBI-US
Jeff DeBalko, President, RBI-US

Vice President Interactive Media & Sales Management

Karthik Krishnan 646-746-7580
karthik.krishnan@reedbusiness.com



Reed Business Information, A Division of Reed Elsevier Inc. | Specialized Business Magazines for Building & Construction | Research | Technology | Electronics | Computing | Printing | Publishing | Health Care | Foodservice | Packaging | Environmental Engineering | Manufacturing | Entertainment | Media | Home Furnishing | Interior Design | and Lodging. Specialized Consumer Magazines for Residential Design. PROFESSIONAL BUILDER (USPS 976-140, GST #123397457, C.P.C. Int'l Pub Mail #280631) Vol. 74, No. 12 is published monthly by Reed Business Information, 8878 S. Barrons Blvd., Highlands Ranch, CO 80126. (subscription includes all issues). Reed Business Information is a Division of Reed Elsevier Inc., 360 Park Avenue South, New York, NY 10010. General Manager, Dean Horowitz; Editor, David Barista; Senior Editor, Sue Bady; John Poulin, CEO/CFO RBI-US. Periodicals Postage Paid at Littleton, CO 80126 and additional mailing offices. Circulation records are maintained at Reed Business Information, 8878 S. Barrons Blvd., Highlands Ranch, CO 80126-2345. Phone: 303/470-4445. POSTMASTER: Send address changes to PROFESSIONAL BUILDER, P.O. Box 7500, Highlands Ranch, CO 80163-7500. Publications Mail Agreement No. 40685520. Return undeliverable Canadian addresses to: Deutsche Post, 4960-2 Walker Road, Windsor ON N9A 6J3. Email: subsmal@reedbusiness.com PROFESSIONAL BUILDER copyright 2009 by Reed Elsevier Inc. Rates for nonqualified subscriptions: USA \$120.99 1-year, CAN \$199.99 1-year, MEX \$199.99 1-year, FOR \$329.99. Except for special issues where price changes are indicated, single copies are available for \$10 US and \$15 foreign. Please address all subscription mail to PROFESSIONAL BUILDER, P.O. Box 7500, Highlands Ranch, CO 80163-7500. PROFESSIONAL BUILDER and ANNUAL REPORT OF HOUSING'S GIANTS are registered trademarks of Reed Properties Inc., used under license. Printed in the USA. PS Form 3526-R September 2007. Return undeliverable Canadian addresses to: RCS International, Box 697 STN A, Windsor Ontario N9A 6N4



135,577

home loans closed in September.

That's a lot of promises kept. When your buyers are ready, your Bank of America mortgage loan officer will be too, following through on commitments every step of the way.

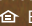
- **Straightforward products**—a full range of clear and competitive home loans to meet your buyers' varying needs. Most loans come with our Clarity Commitment™ document, a one-page, easy-to-understand summary of key loan terms.*
- **Confidence**—your mortgage loan officer will help educate your buyers so they can feel confident choosing the loan that's right for them.
- **Local, accessible experts**—our mortgage loan officers are knowledgeable and reliable, so they'll return your buyers' calls and answer their questions promptly.

Bank of America  **Home Loans**

Bank of Opportunity®



**Refer your buyers today to a local Bank of America mortgage loan officer,
or call 1.800.344.9403 to find one near you.**

*The summary is provided as a convenience, does not serve as a substitute for a borrower's actual loan documents, and is not a commitment to lend. Borrowers should become fully informed by reviewing all of the loan and disclosure documentation provided.
Bank of America, N.A., Member FDIC.  Equal Housing Lender. Credit and collateral are subject to approval. Terms and conditions apply. This is not a commitment to lend. Programs, rates, terms and conditions are subject to change without notice. © 2009 Bank of America Corporation. AR95959

What separates it from a wood door
IS THE WOOD.



Some artists work in oils. Others in fiberglass. JELD-WEN® Custom Fiberglass doors are handcrafted to look and feel like real wood, even down to the knots and grain. And fiberglass means they're easy to care for and they last a long time. So if your customers want the wood look without the wood maintenance, we have their doors. Learn more. Click www.jeld-wen.com/12314. Visit your JELD-WEN dealer.

Member



RELIABILITY *for real life®*

JELD-WEN®
WINDOWS & DOORS

For more info, go to HousingZone.com/PBinfo and enter # 23730-20



A362 Mahogany



A1202 Knotty Alder